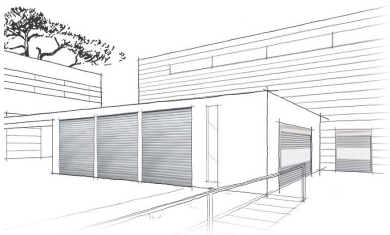


Manual: No. 1950 **INSTALLATION**

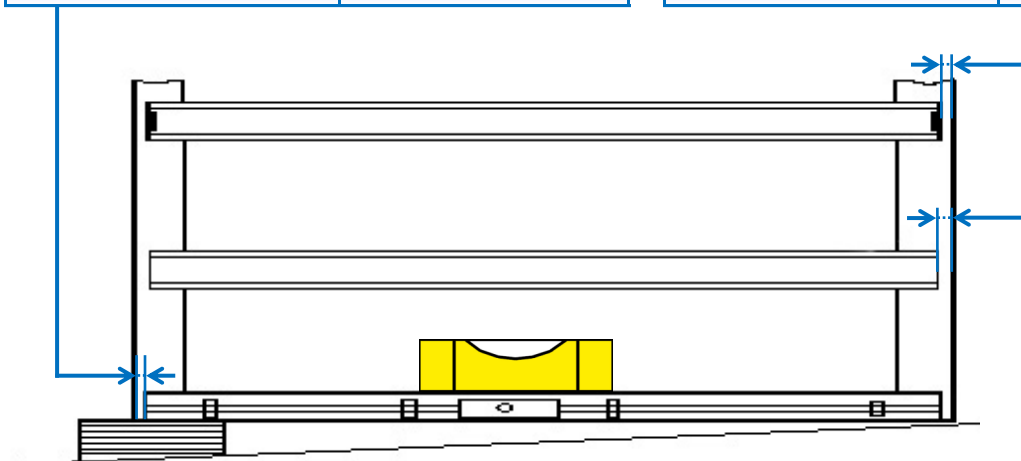
Murax P110 Shutter



Layout for slats with noise reduction clips

End-slat	
The inner clearance on each side of the end-slat must be observed in accordance with the depth of the guiding rail	
Bottom clearance of guiding rail	Depth of guiding rail
20 mm	60 mm
25 mm	80 mm

Slat with clips	
The inner clearance on each side of the end-slat must be observed in accordance with the depth of the guiding rail	
Bottom clearance of guiding rail	Depth of guiding rail
8 mm	60 mm
13 mm	80 mm



Slat without clips	
The inner clearance on each side of the end-slat must be observed in accordance with the depth of the guiding rail	
Bottom clearance of guiding rail	Depth of guiding rail
20 mm	60 mm
25 mm	80 mm

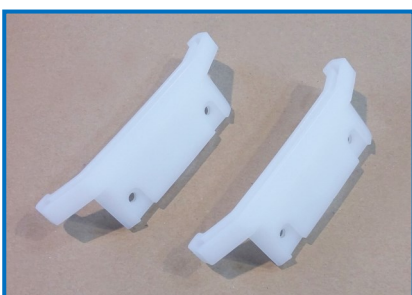
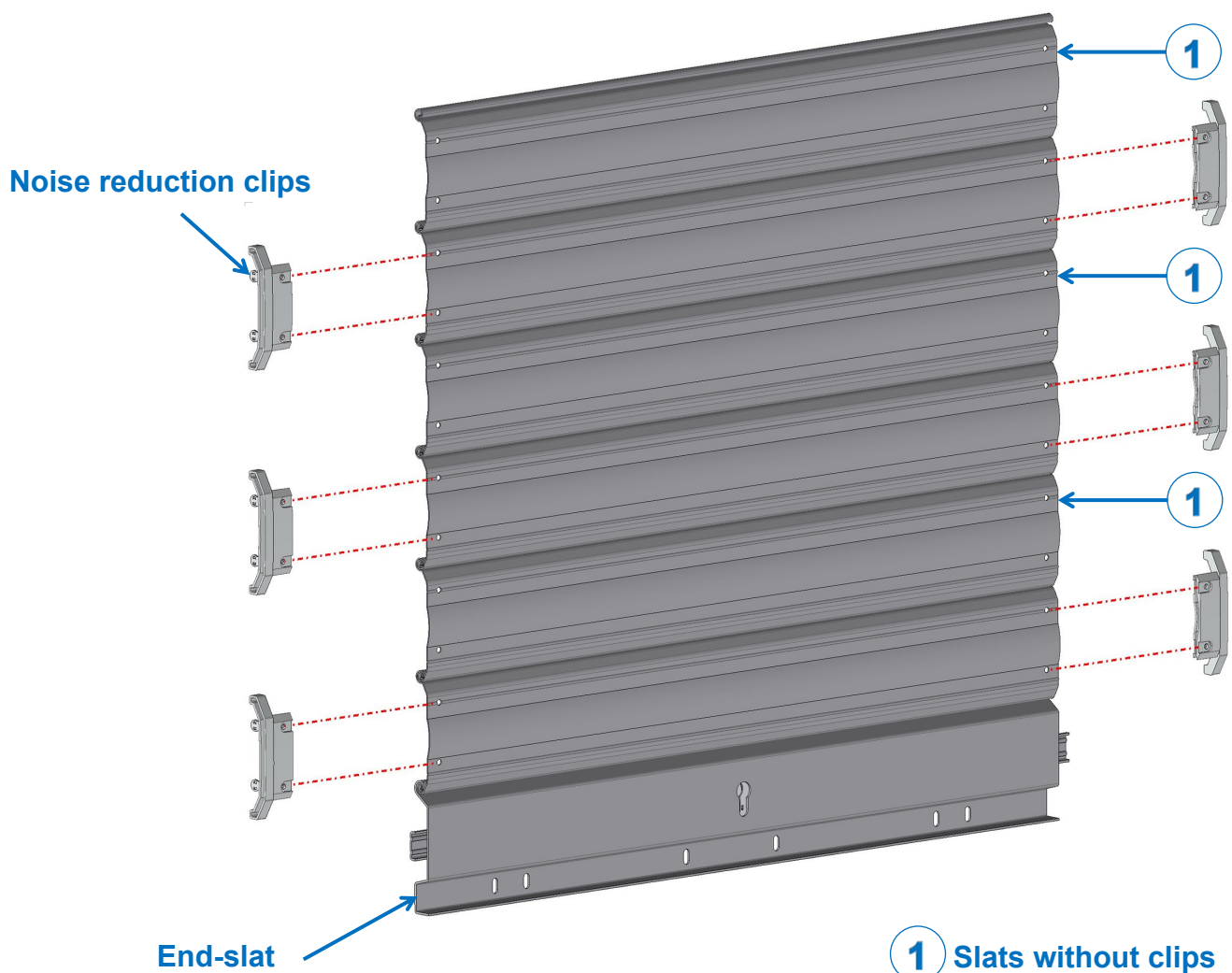
(Document reserved for installers)

Assembling the shutter

- Fit the slats together on the floor, starting with the end-slat.
- or
- Fit the slats together starting from the axle, without inserting them into the guiding rails.

The clips

- Once the shutter has been assembled, fit the clips onto every other slat, starting from the first slat, just above the end-slat.
- The roller slats must not be equipped with anti-noise clips. (The roller slats start from the opening in the guiding rails, at the bottom of the lateral winding plates).
- Insert the shutter into the guiding rails as indicated in the installation manual provided.



Please note:

2 additional noise reduction clips are provided in case of loss or the need for replacement.