

Manual No. 7081

04/25

INSTALLATION

Residential garage doors Manual or Motorised



RT200
(Torsion Springs)



(Document reserved for installers)

Contents

Installation instruction.....	3
Before installation	4
Required equipment.....	4
Kit contents for each door configuration/option	5
Kits for MOTORIZED and MANUAL doors.....	5
Kits for MOTORIZED doors.....	6
Kits for MANUAL doors.....	6
Vertical rail installation.....	7
Checking the bay	7
As standard : Mounting of vertical seals	7
As standard : Mounting the brackets and the seal on the cross-member	8
Thermal insulation OPTION : Mounting of vertical seals	8
Thermal insulation OPTION : Mounting the brackets and the seal on the cross-member	9
Fixing of the cross-member to the floor.....	9
Assembling the spring assembly on the floor.....	10
Layout of the frame	11
Fixing the vertical rails.....	11
Horizontal rail installation	12
Assembling of curves.....	12
Fixing the horizontal rails	13
Assembling the back bar brackets	14
Installing the back bar	14
Installing the hangers	15
Back bar extension (option).....	15
Checking the diagonals.....	16
Installing the spring mounting bracket (operator support)	17
Mounting of the panels	17
Grease all roller shafts	17
Panels preparation	18
Installing the bottom panel	19
Installing the intermediate panel(s)	20
Installing the top panel.....	21
Cable installation	22
Positioning the cable drums	22
Routing the cables around the cable drums.....	23
Checking the tension of the cables.....	24
Spring adjustments.....	25
Spring tension.....	25
Table for number of spring tension turns.....	25
Adjusting the rollers	26
Checking the balance.....	27
Finishes	27
Leveling the shutter.....	27
Adjusting and fixing of the cross-member	28
Fixing the upper roller supports	28
Installation of opening stop (if manual door).....	28
Mounting the handle.....	28
Mounting the latch (optional on motorised doors)	29
Mounting of the lock (optional on motorised and manual doors).....	30
Installing the pull cord (if manual door)	34
Weather seal (optional).....	34
Greasing the bottom of the rails	34
Fixing the « SOMMER » operator to the back bar.....	35
In case of incorrect manual functioning.....	35

Installation instruction



CAUTION !



**To ensure that this product is assembled,
used and maintained in complete safety,
it is important to follow the instructions provided in this document.
For everyone's safety, please adhere to the precautionary measures below.**

- Before beginning the assembly, read this manual carefully.
- This closure must be installed by a professional technician.
- All the parts delivered are specifically sized for this product.
Adding and/or using other parts may be detrimental to safety and may affect the product's warranty.
- Any modification or improvement of this closure must be compliant with the standard BS EN 13241:2003+A2:2016.
In this case, a " Modification/Transformation " file must be created by the installer as per the standard BS EN 12635 :2002+A1 :2008 annex C.
- Considerable force is exerted by the torsion springs ;
carry out work in accordance with the safety instructions.
Use the appropriate tools to install these products.
Ensure that all work is carried out on a stable floor.
- Ensure that the assembly area is adequately lit, clear, clean and clearly marked out.
- Ensure that no other people are present at the assembly site apart from the installers.
Indeed, non-authorized persons such as children, who are present at the site risk injury during assembly.
- All the components of this closure must be installed in compliance with the installation instructions provided in this manual.
- All the requirements of the standards BS EN 13241:2003+A2:2016 must be met and verified, if necessary.

Max. tightening torque :

Assembly screws = 10 Nm

Panels mounting screws = 12 Nm

Min. working load per attachment point :

Compensating shaft = 300 daN

Rails = 40 daN

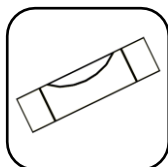
Before installation

Required equipment

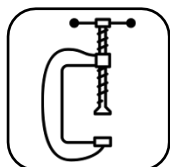


Laser level

or



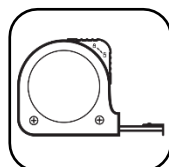
Spirit level



Clamps



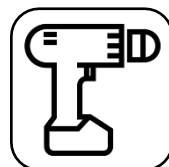
Plumb bob



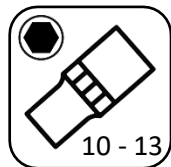
Tape measure



Utility knife



Electric
screwdriver



Sockets
10 - 13



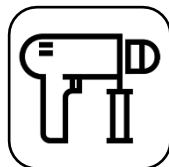
Cruciform bit



Flat keys
10 - 13



Allen key
3



Perforator



Torx bit
30



Ladder



Phillips
screwdriver



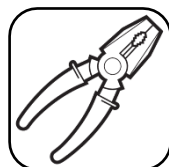
Flat
screwdriver



Pencil



Grinder



Combination
pliers



Cutting
pliers



Locking
pliers



Steel drill bits
Ø2-4,2-4,5-10-13



Hammer



Rivet gun



Hacksaw



Silicone seal



Brush



Pot of grease



Grease spray

Kit contents for each door configuration/option

Kits for MOTORISED and MANUAL doors

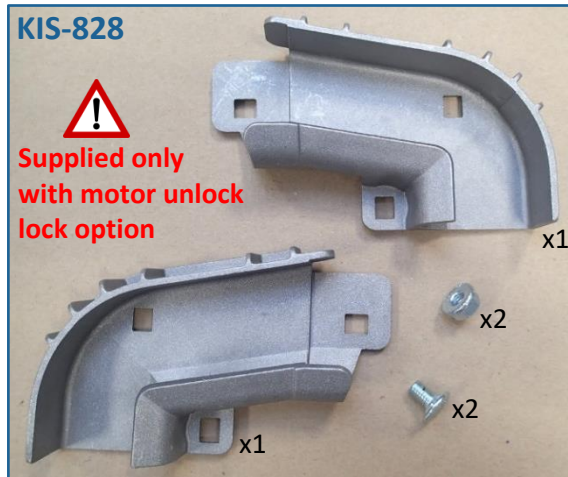


Kits for MOTORISED doors

KIS-028



KIS-828

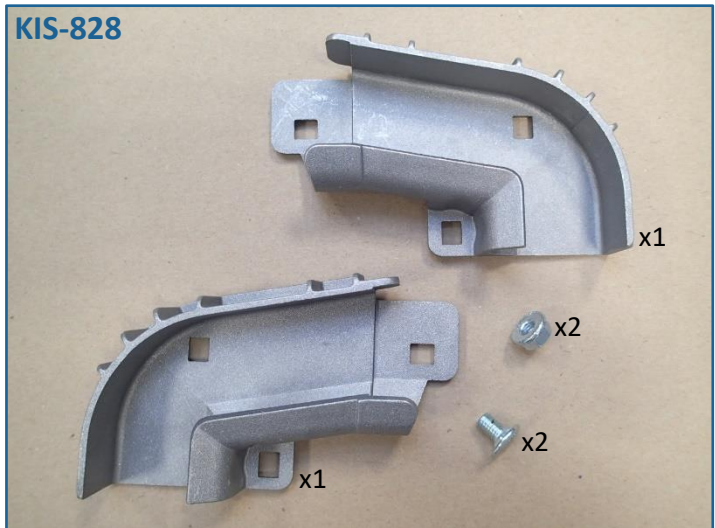


Kits for MANUAL doors

KIS-012

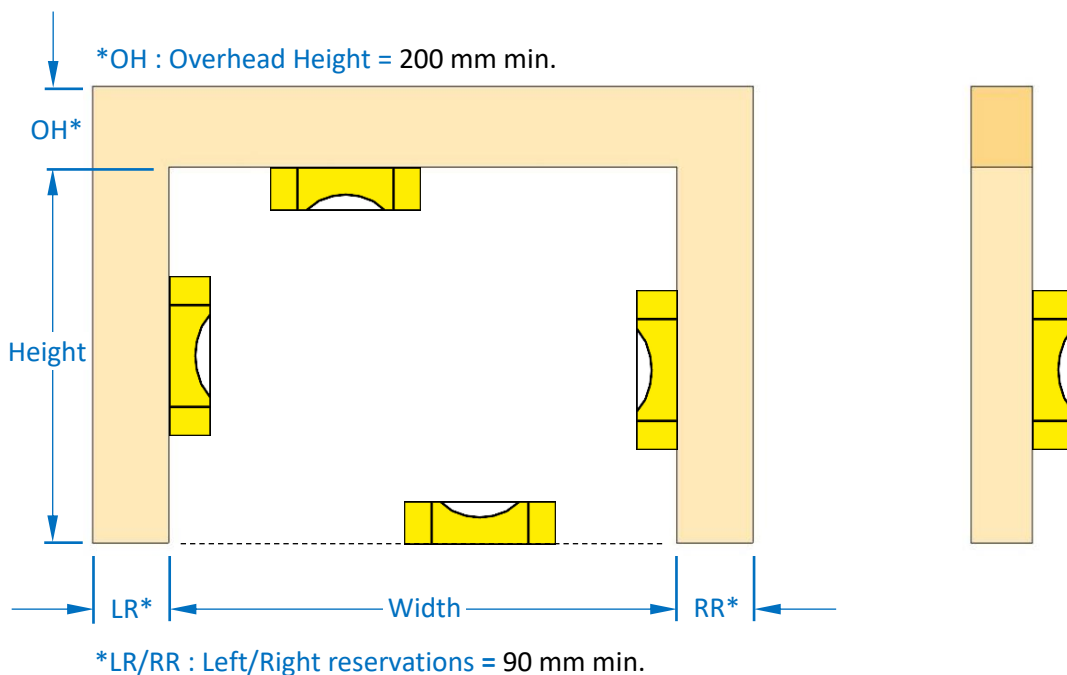
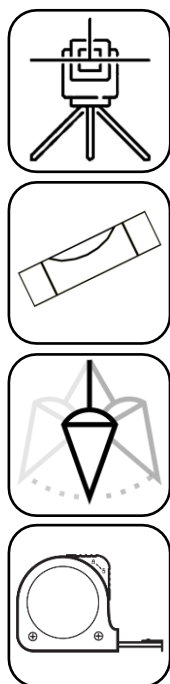


KIS-828

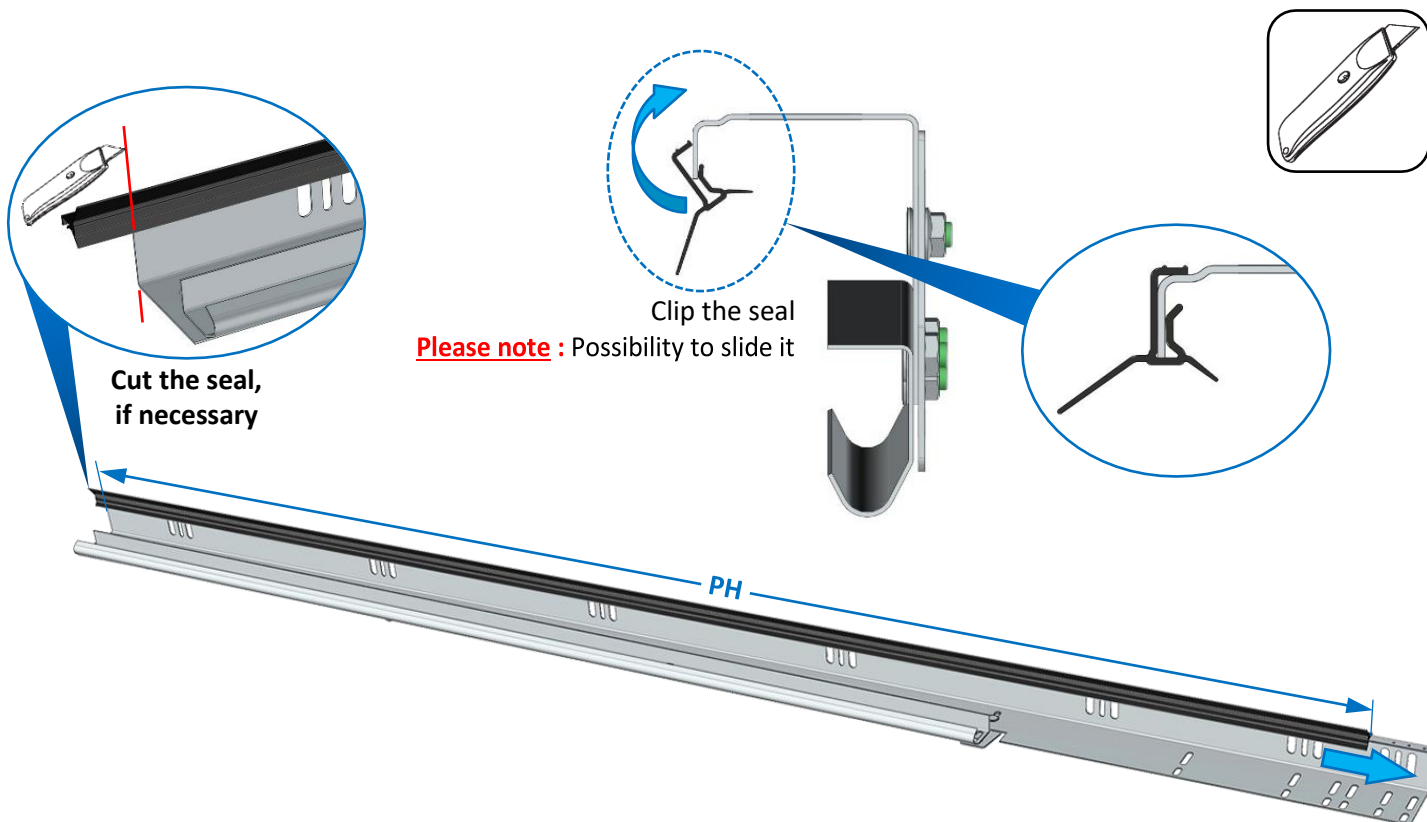


Vertical rail installation

Checking the bay

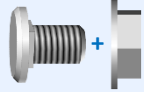


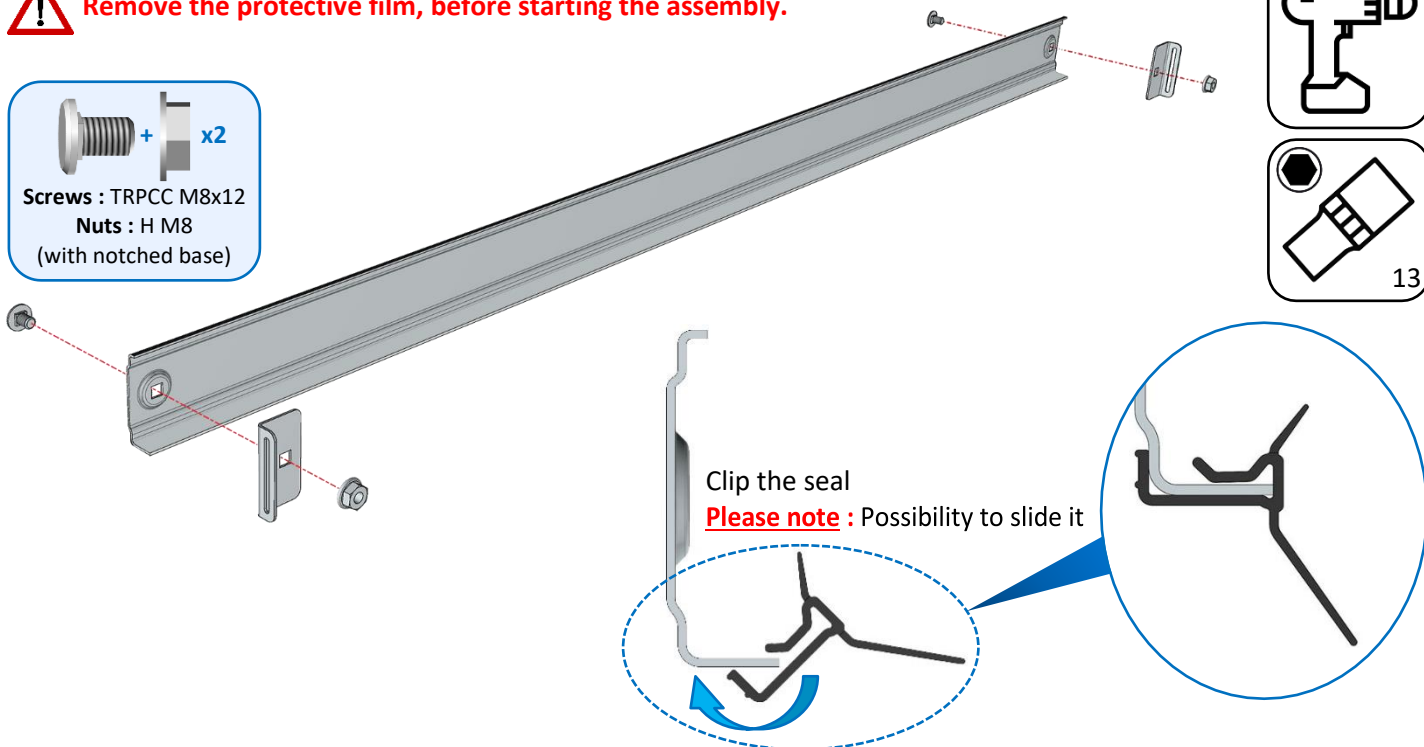
As standard : Mounting of vertical seals



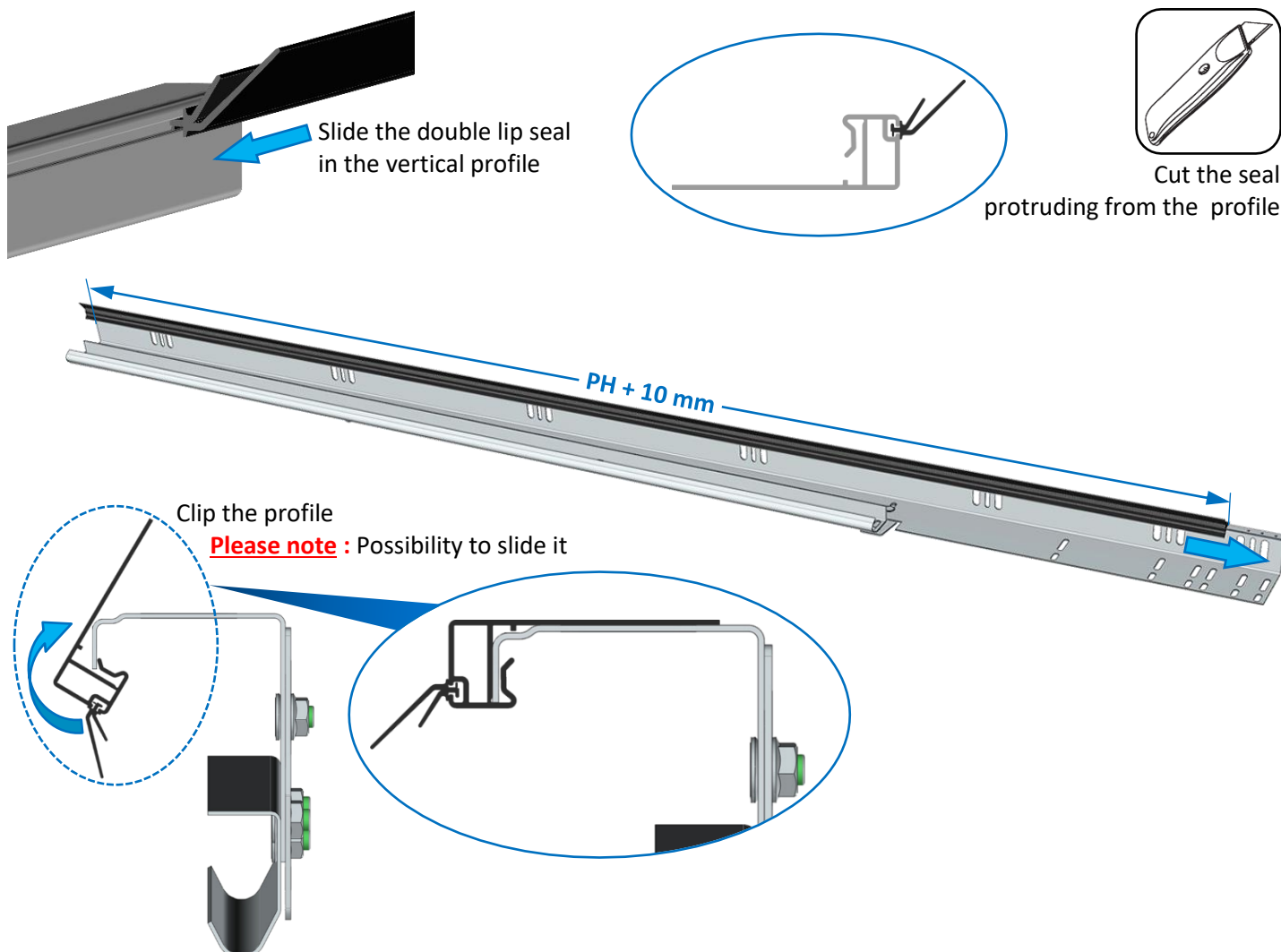
As standard : Mounting the brackets and the seal on the cross-member

! Remove the protective film, before starting the assembly.

 x2
Screws : TRPCC M8x12
Nuts : H M8
(with notched base)

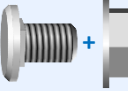


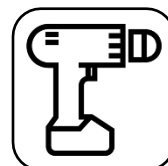
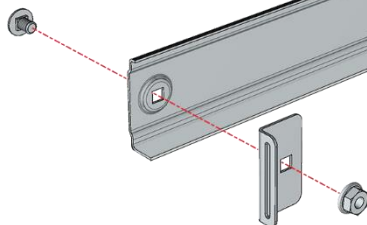
Thermal insulation OPTION : Mounting of vertical seals



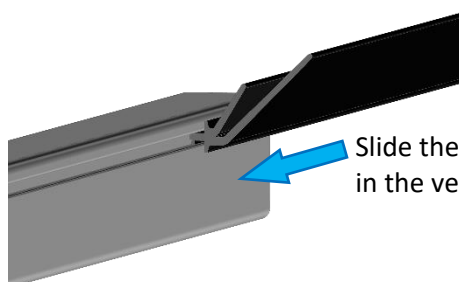
Thermal insulation OPTION : Mounting the brackets and the seal on the cross-member

! Remove the protective film, before starting the assembly.

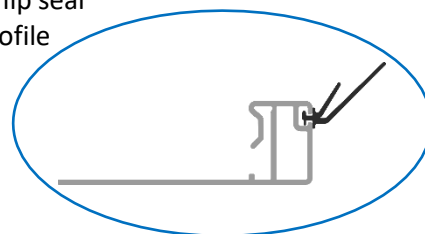
 x2
Screws : TRPCC M8x12
Nuts : H M8
(with notched base)



Cut the seal protruding from the profile

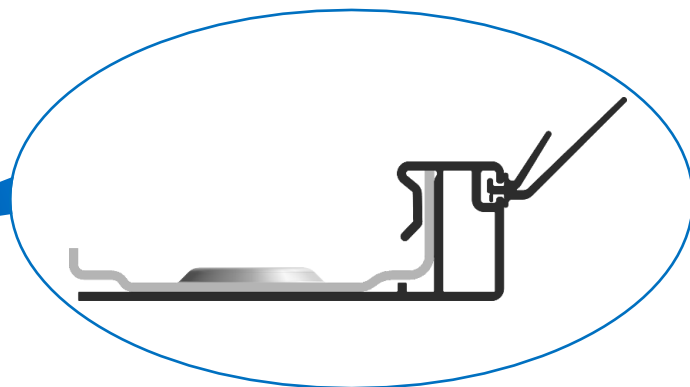
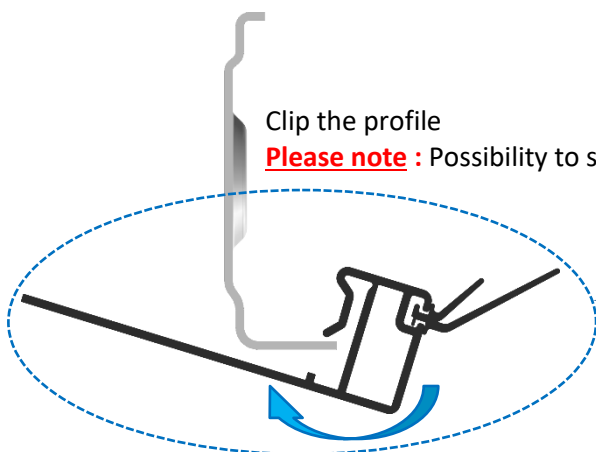


Slide the double lip seal in the vertical profile

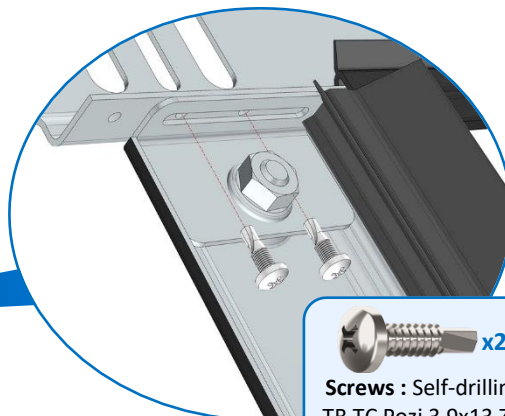
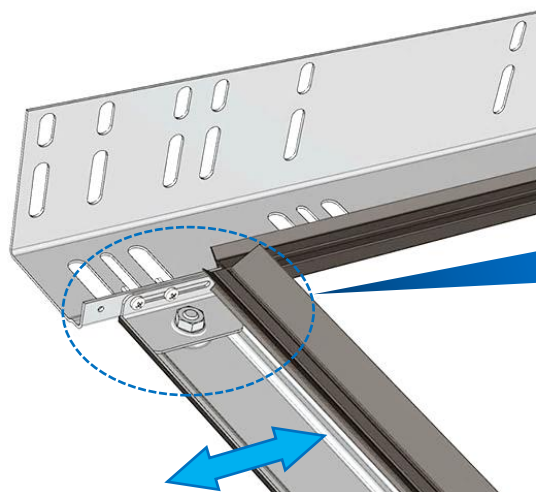


Clip the profile

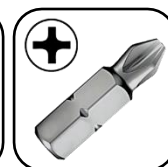
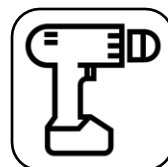
Please note : Possibility to slide it



Fixing of the cross-member to the floor



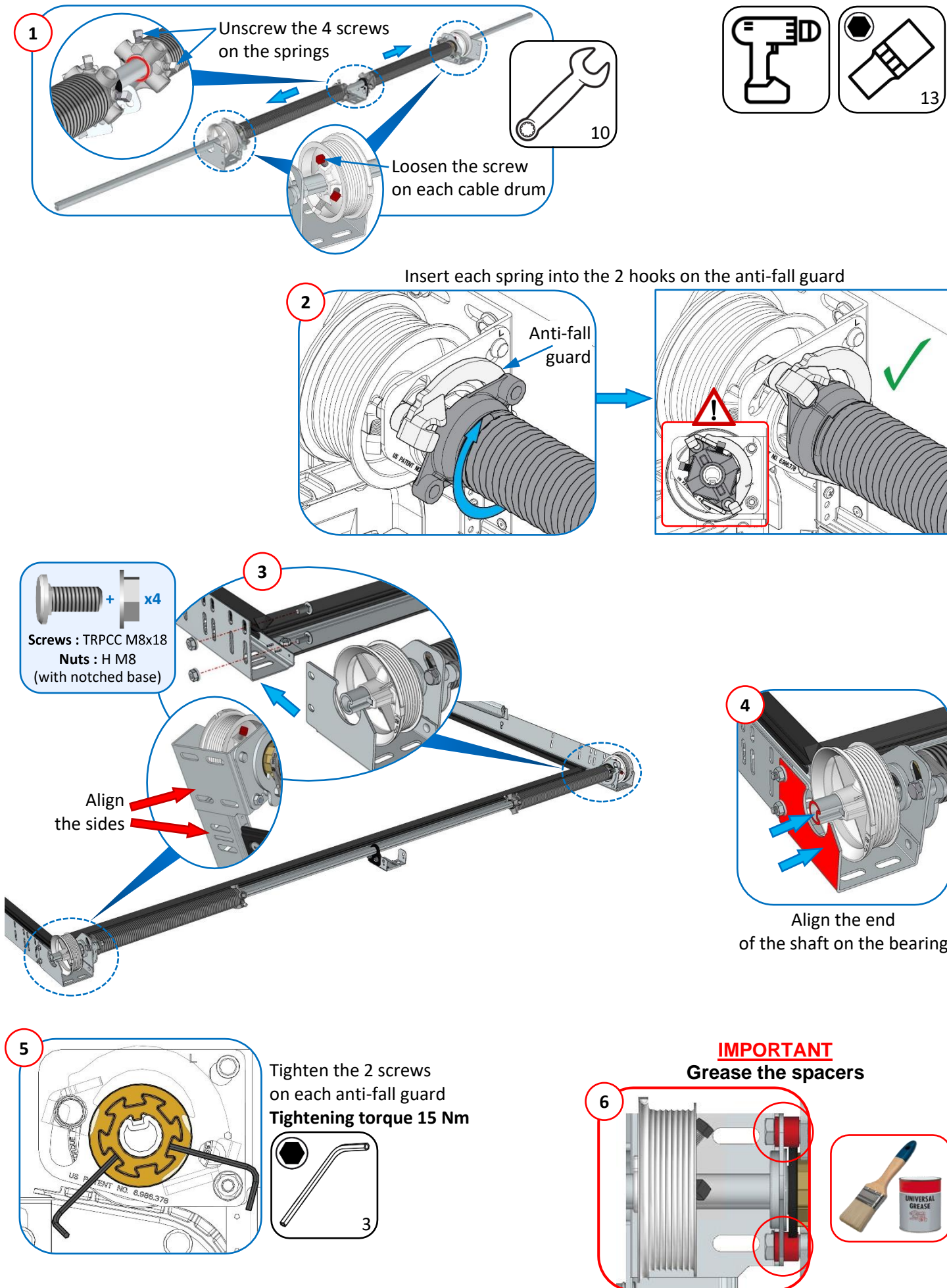
 x2
Screws : Self-drilling
TB TC Pozzi 3,9x13 ZN



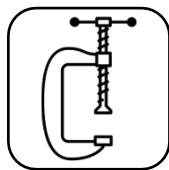
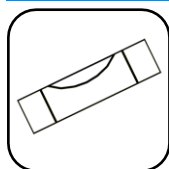
The vertical position of the cross-member will be adjusted once the rails have been mounted on the wall

Repeat the process with the other vertical rail

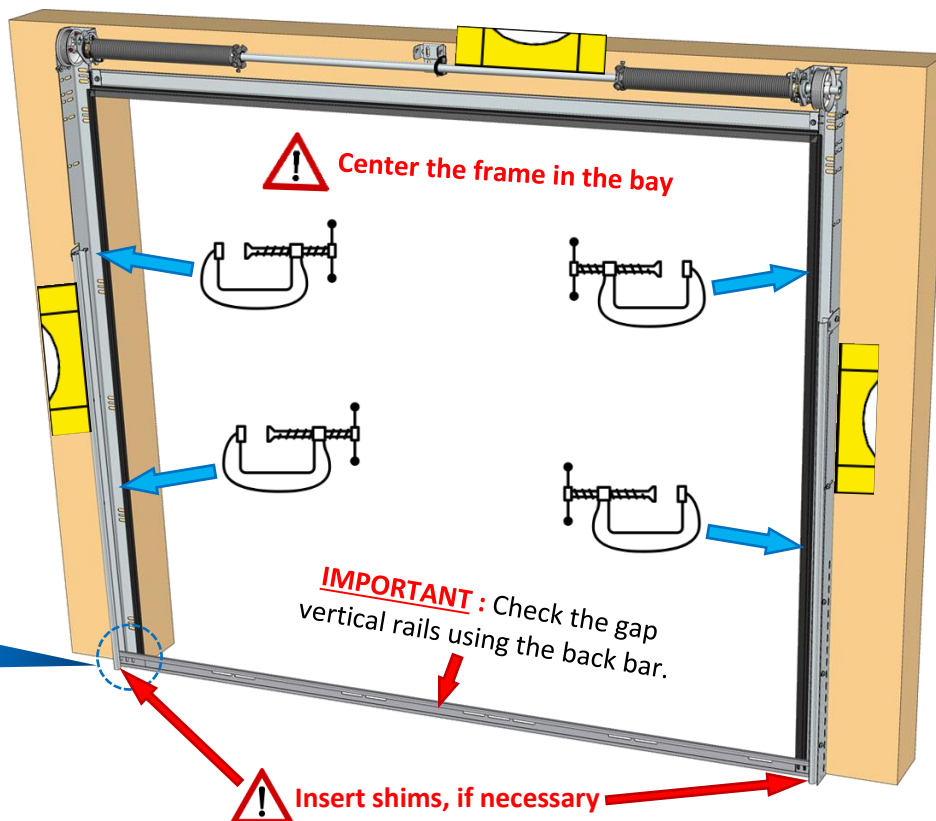
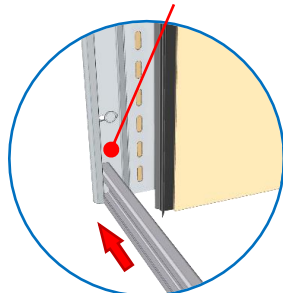
Assembling the spring assembly on the floor



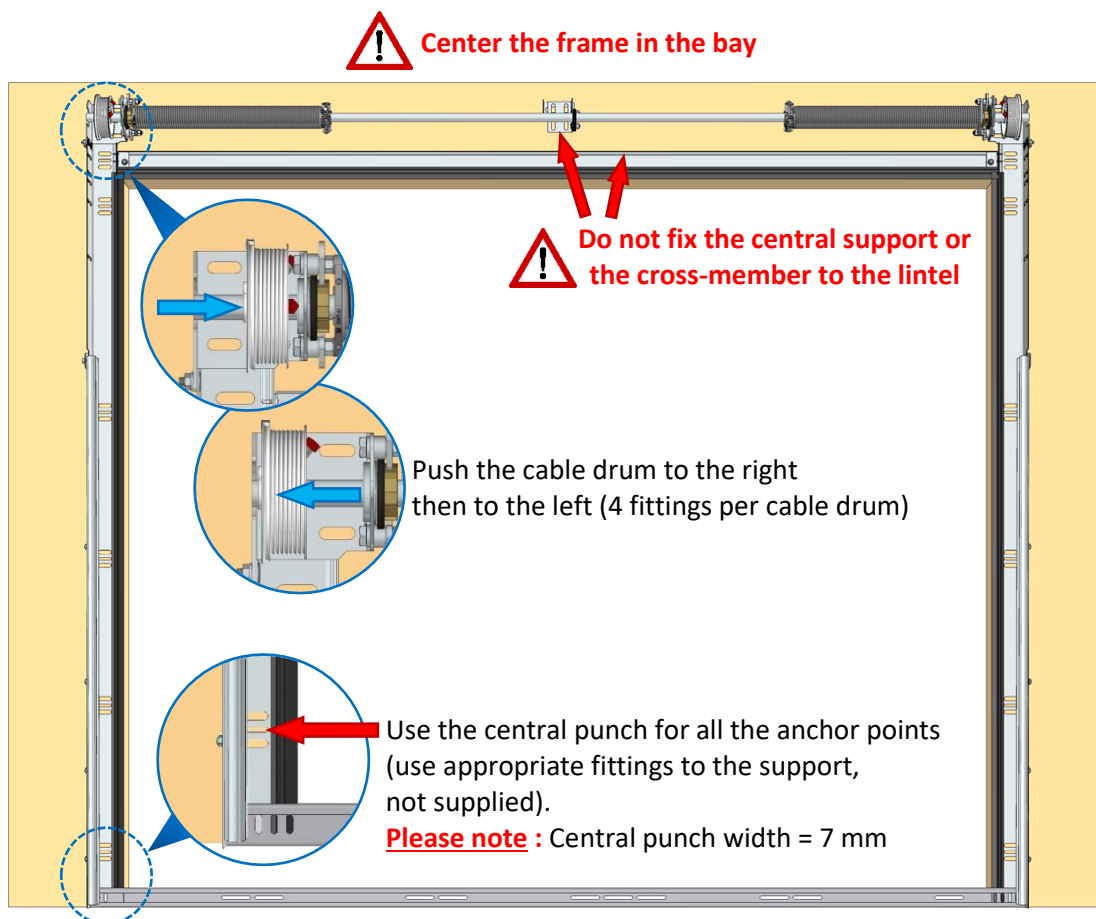
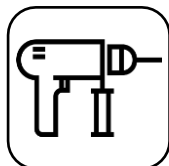
Layout of the frame



The back bar must be in contact with the backstop



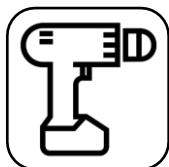
Fixing the vertical rails



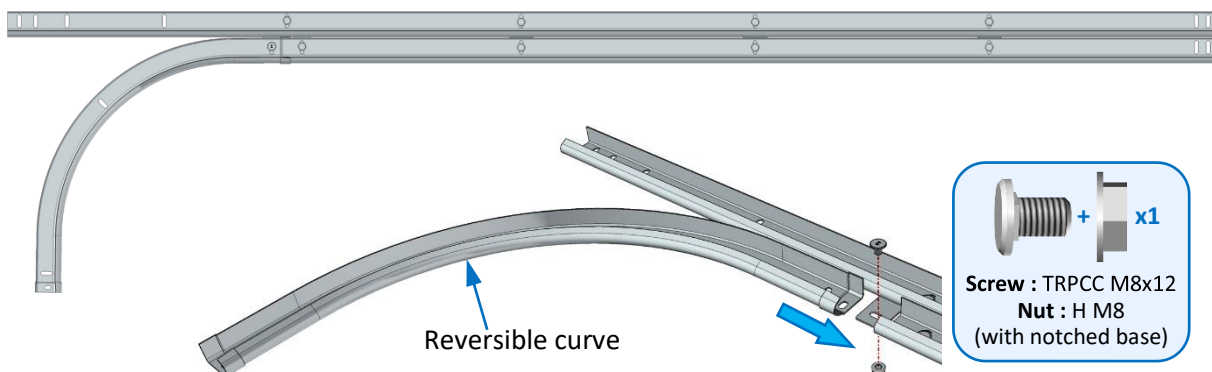
Repeat the process on the opposite side

Horizontal rail installation

Assembling of curves

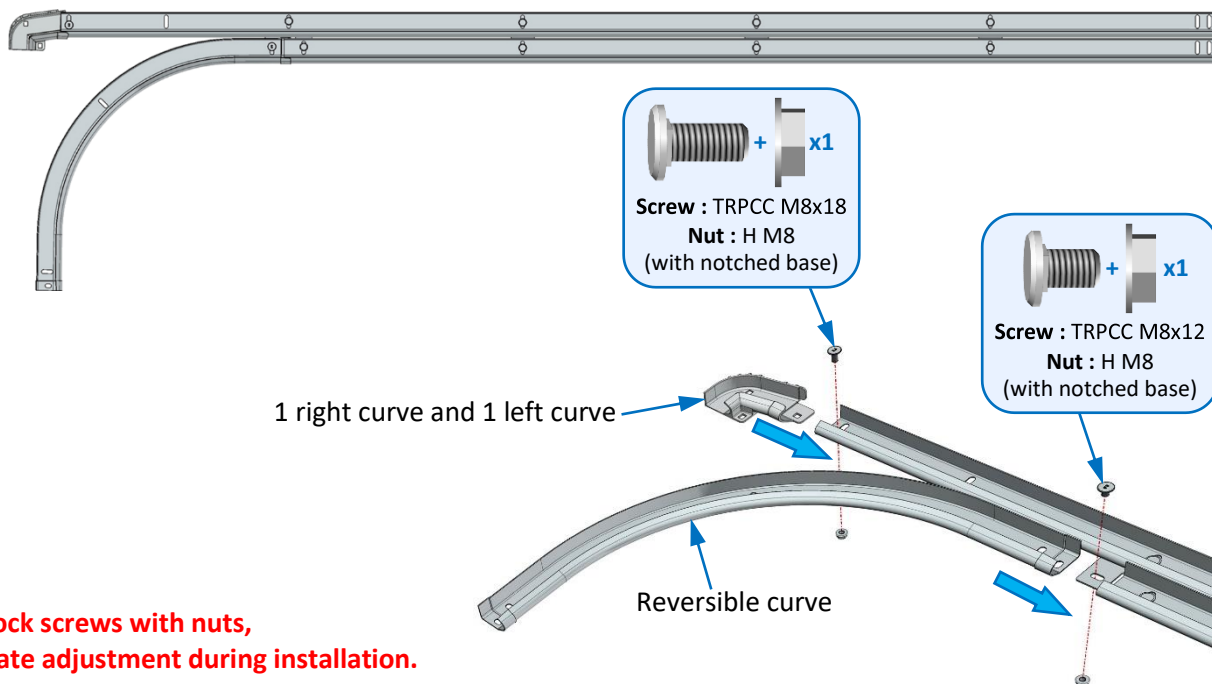


HORIZONTAL RAILS for Motorised doors



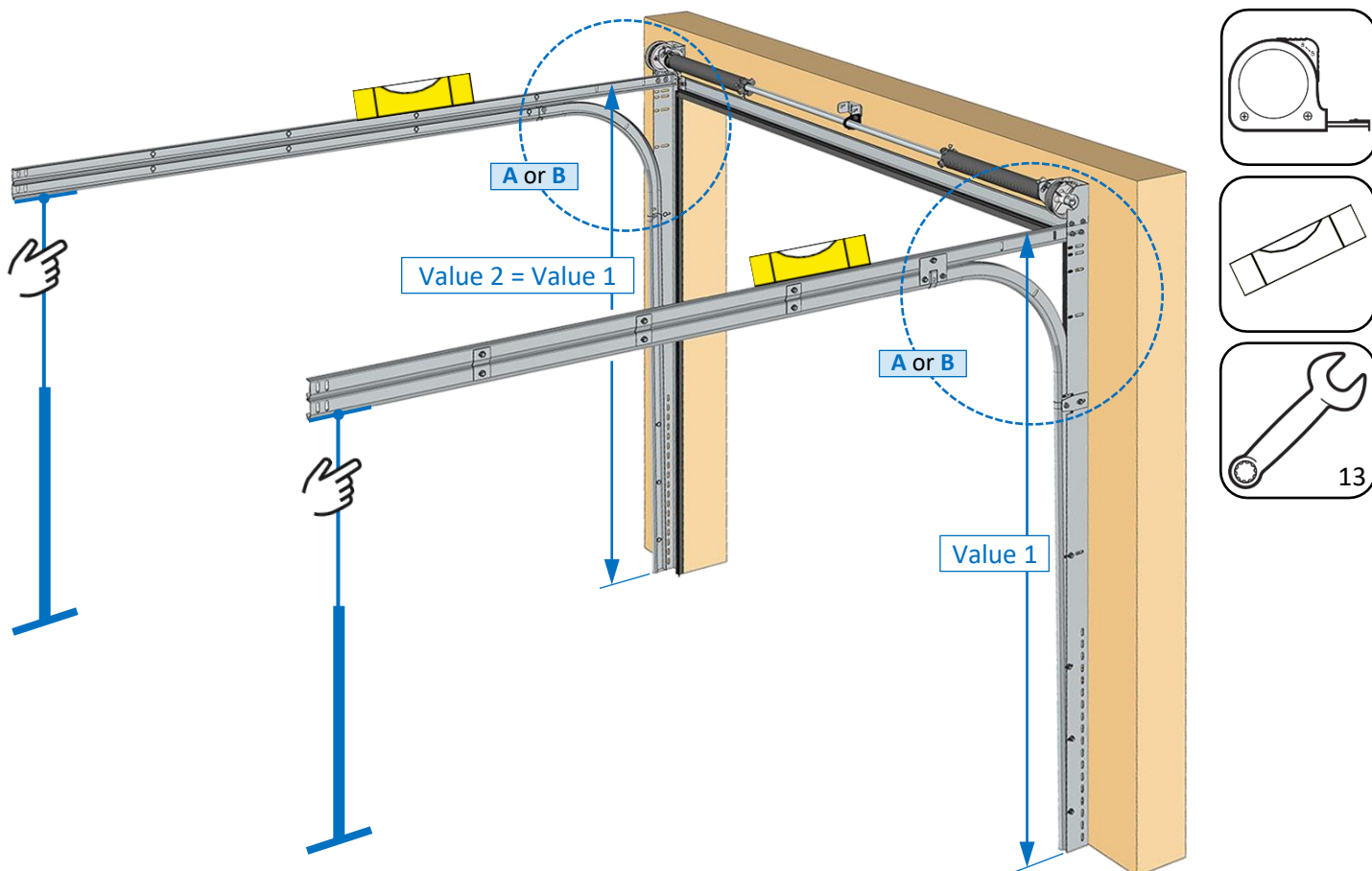
OR

HORIZONTAL RAILS for Manual doors

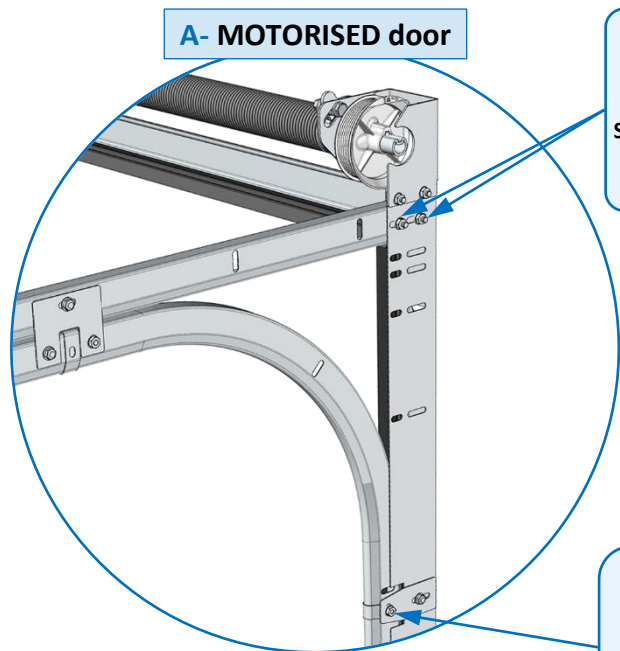


**Do not lock screws with nuts,
to facilitate adjustment during installation.**

Fixing the horizontal rails



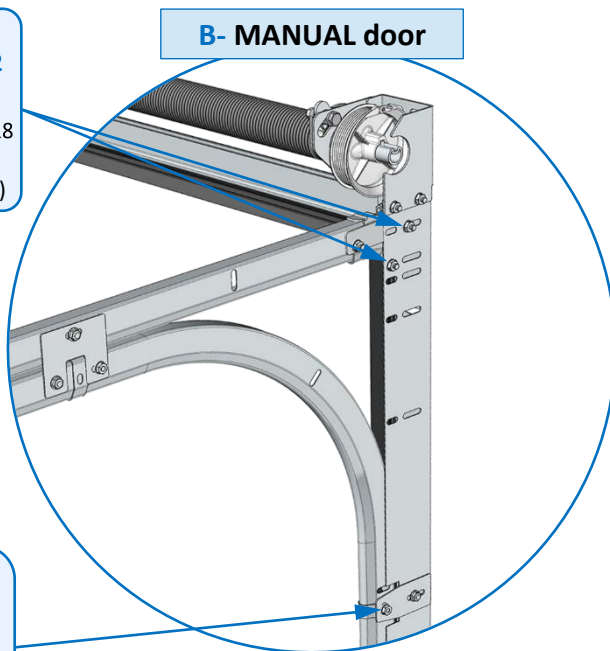
A- MOTORISED door



Screws : TRPCC M8x18
Nuts : H M8
(with notched base)

+ x2

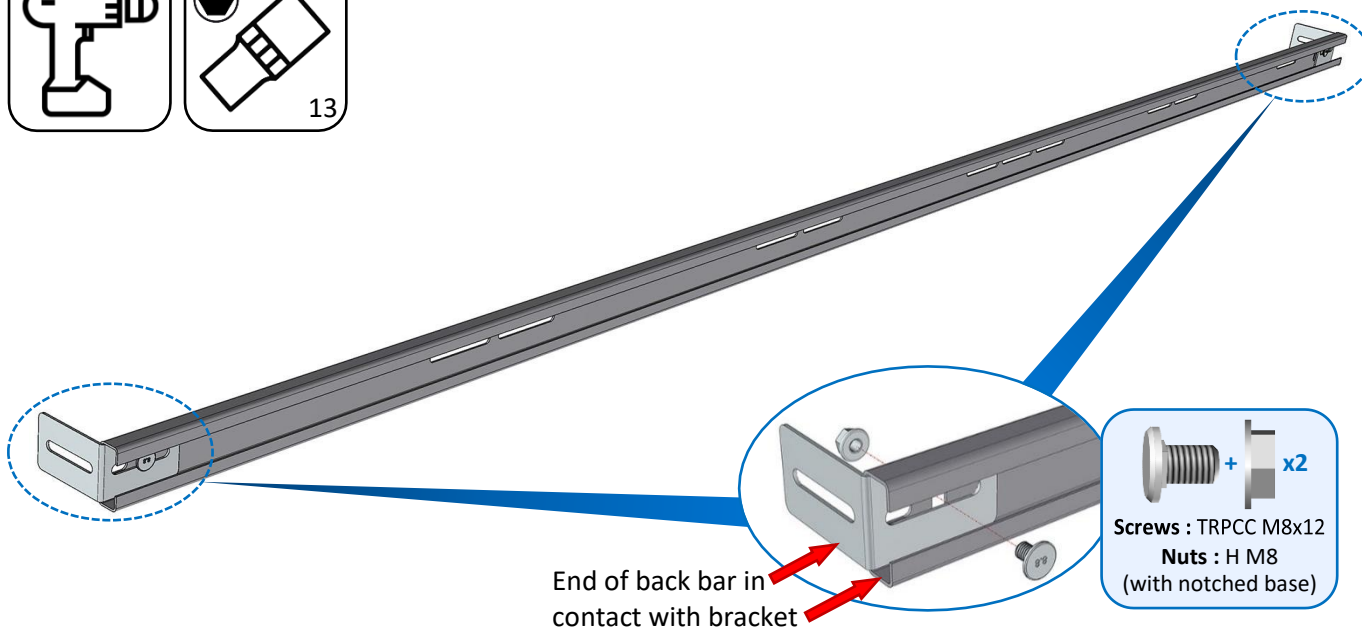
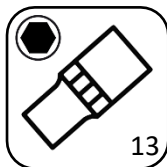
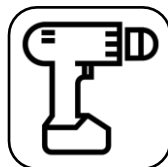
B- MANUAL door



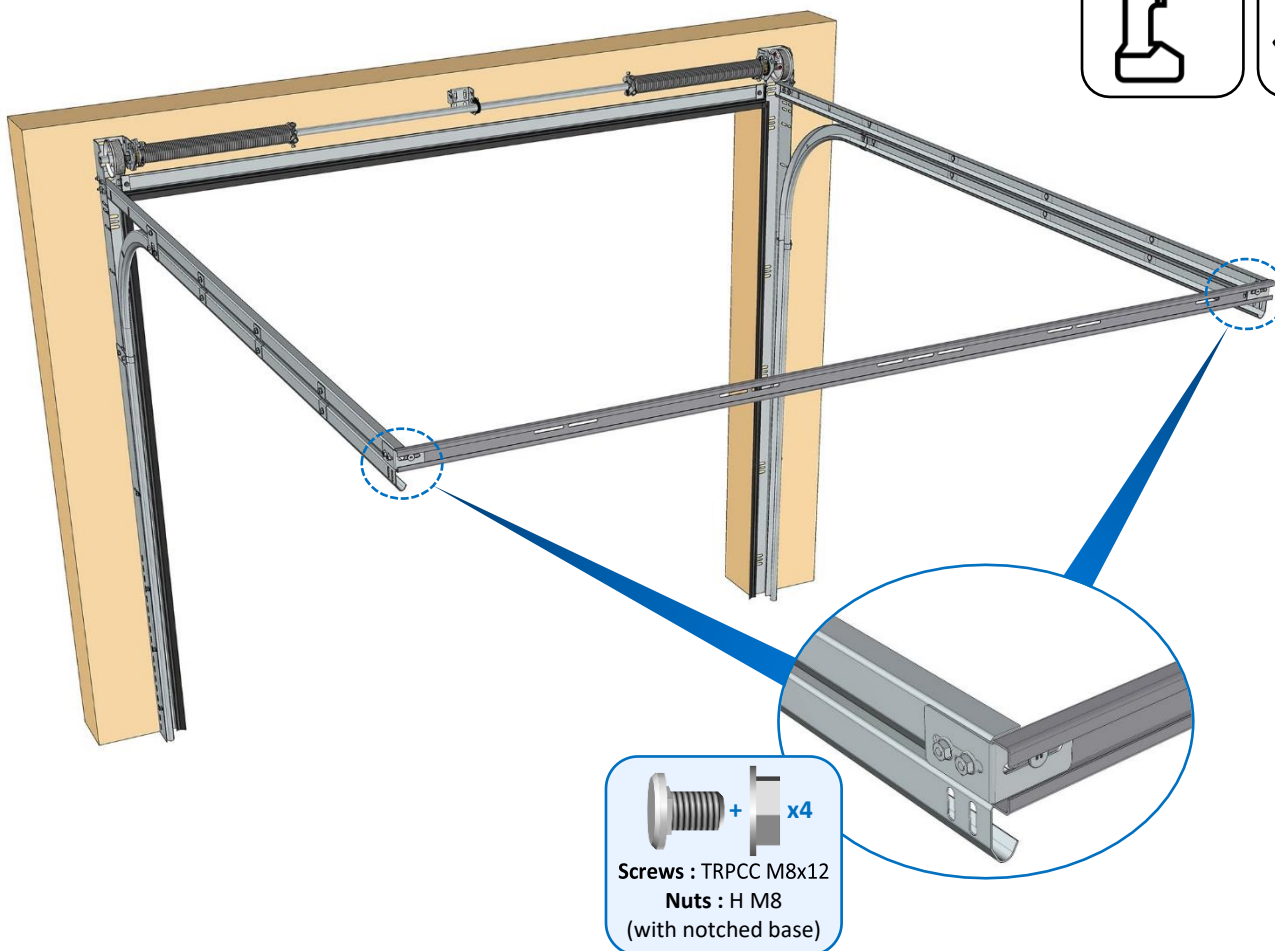
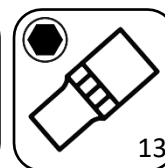
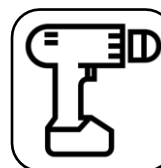
Screw : TRPCC M8x12
Nut : H M8
(with notched base)

+ x1

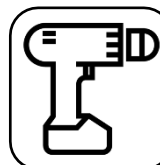
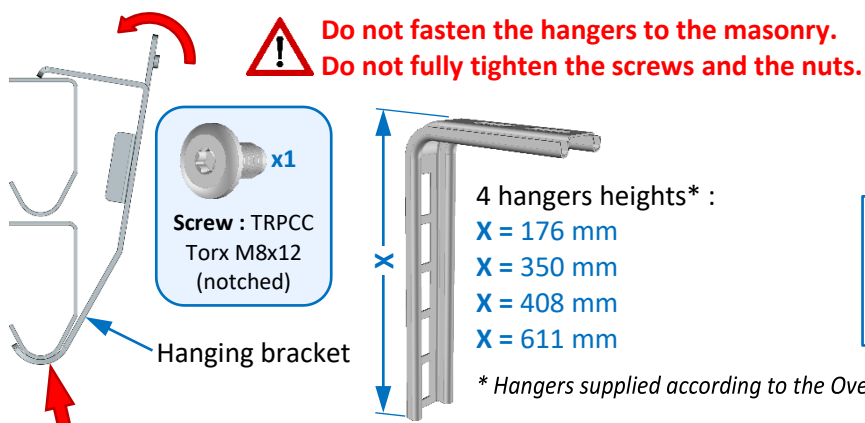
Assembling the back bar brackets



Installing the back bar



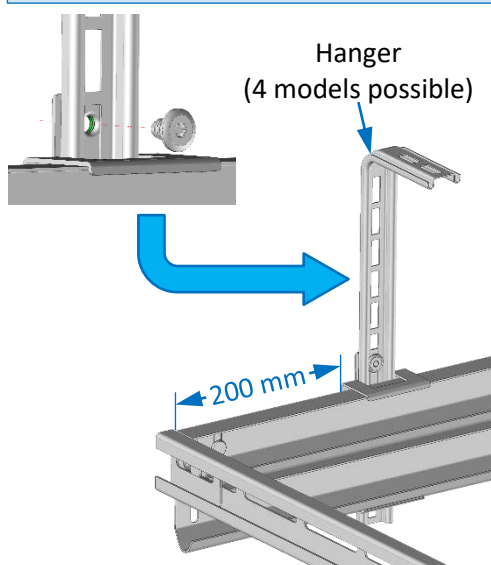
Installing the hangers



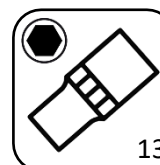
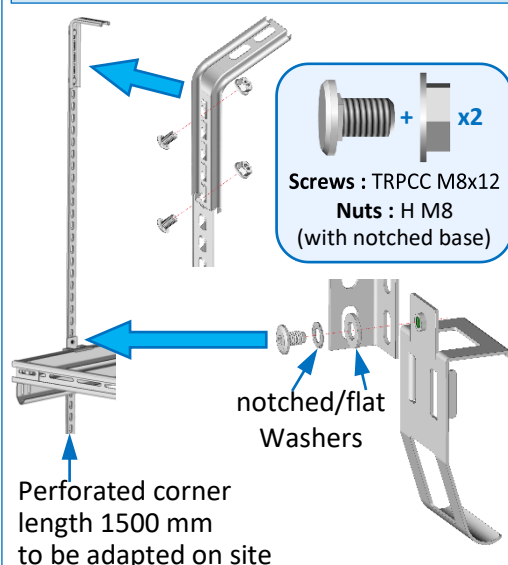
Adapt the number of hangers to the dimensions of the doors :

- 2 hangers, if PW ≤ 3000 or PH ≤ 2150 mm
- 4 hangers, if PW > 3000 or PH > 2150 mm

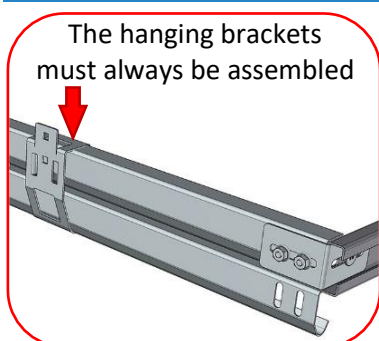
Assembly : 200 mm ≤ OH ≤ 670 mm



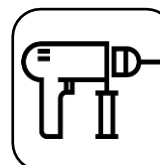
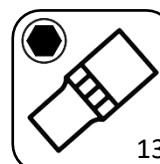
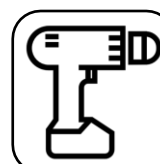
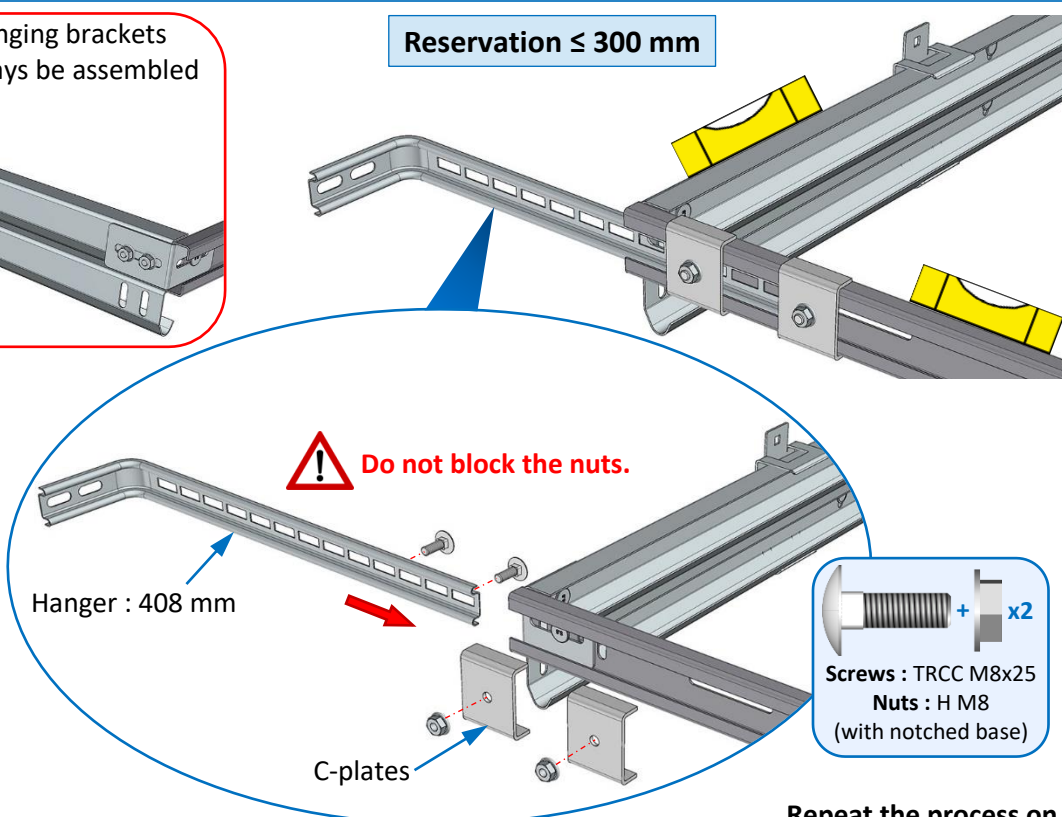
Assembly : 670 mm < OH ≤ 1600 mm



Back bar extension (option)

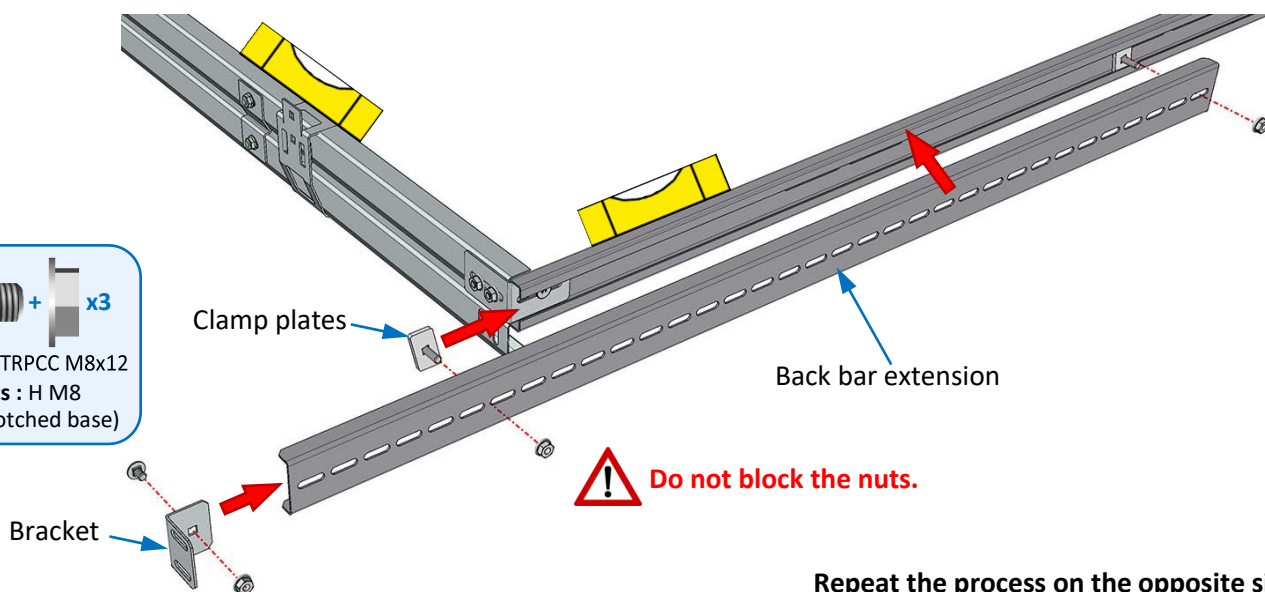
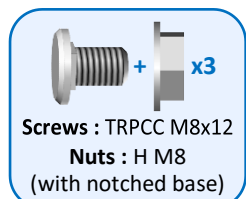


Reservation ≤ 300 mm



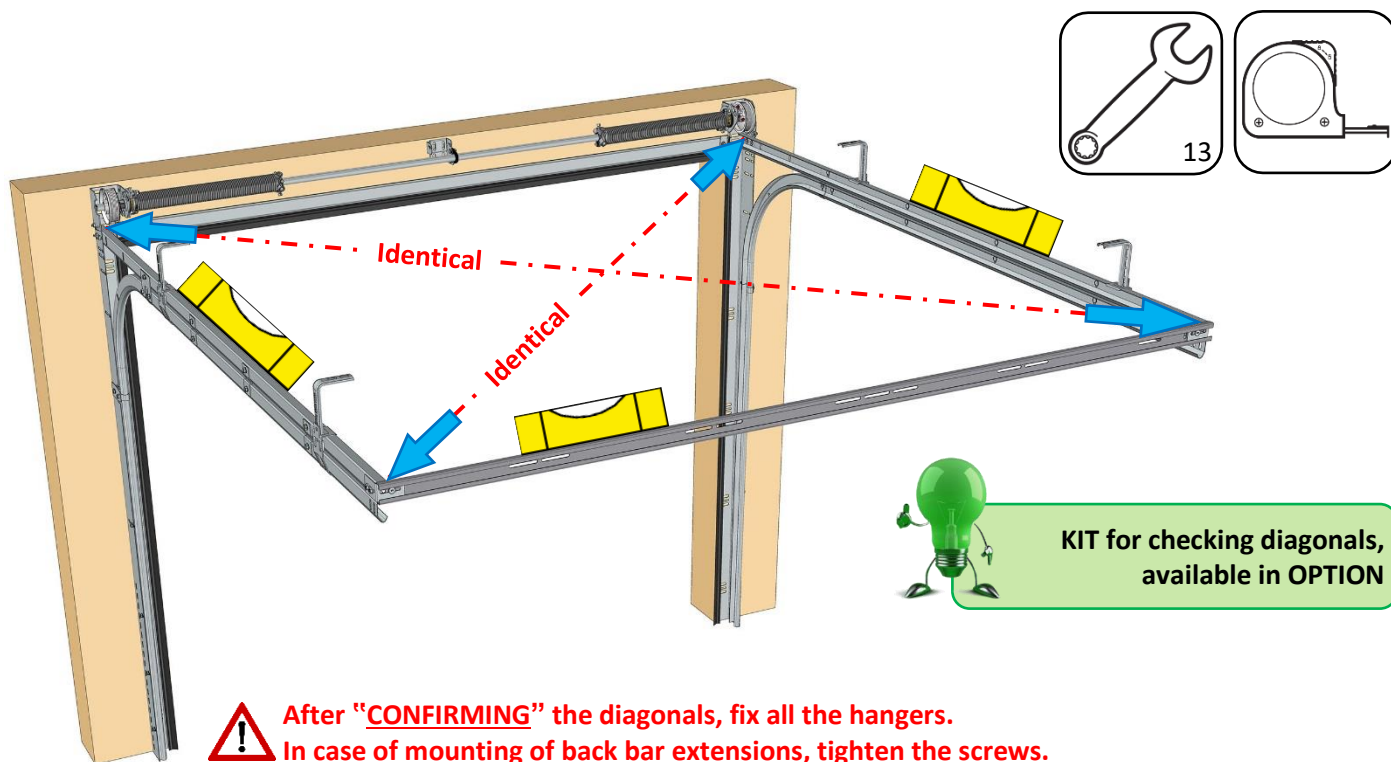
Repeat the process on the opposite side

300 mm < Reservation ≤ 1000 mm

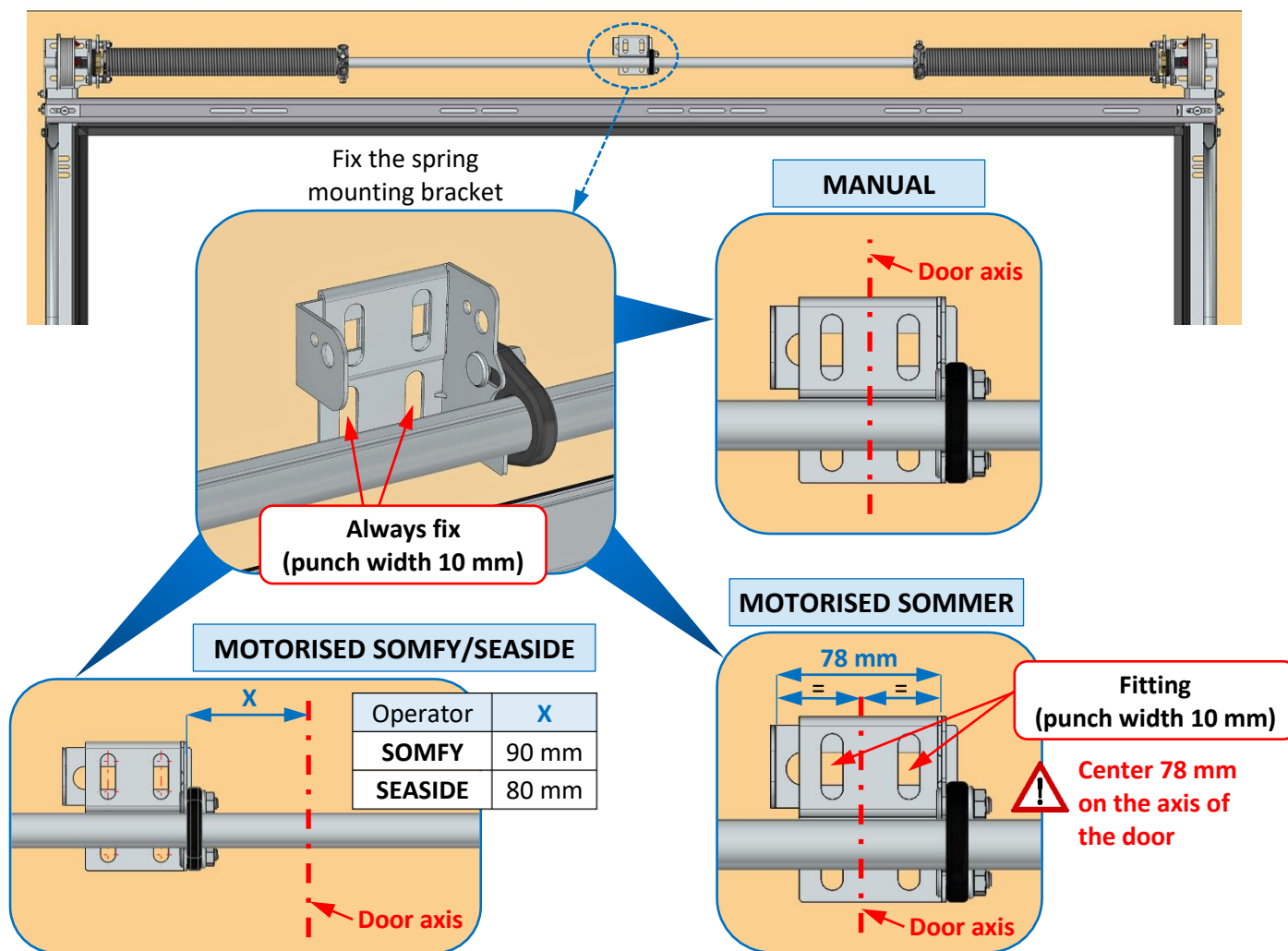


Repeat the process on the opposite side

Checking the diagonals

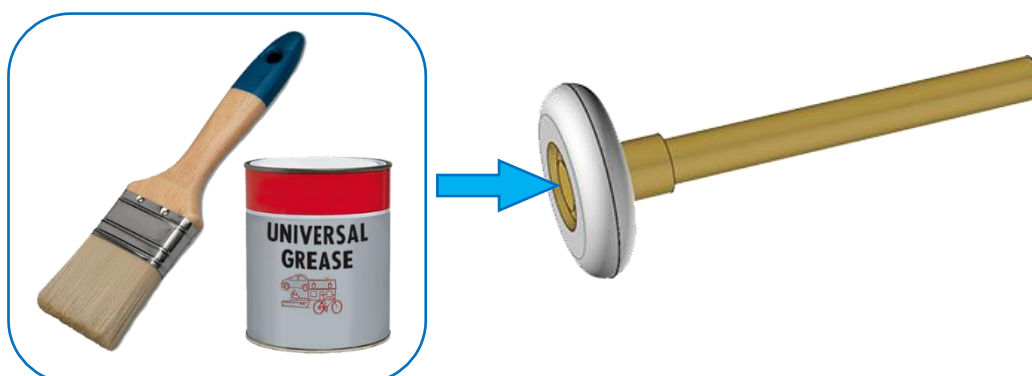


Installing the spring mounting bracket (operator support)



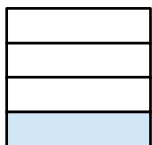
Mounting of the panels

Grease all roller shafts



Panels preparation

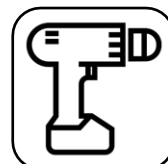
BOTTOM PANEL



x8
Screws : Self-drilling
TB Torx 6,3x25

! OPTION tandem

OR



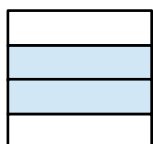
Cut the protruding seal, if necessary.

x2
Screws : Self-drilling
TB Torx 6,3x25

**! No central hinge
if door PW ≤ 2600 mm**

x2
Screws : Self-drilling
TB Torx 6,3x25

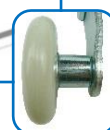
INTERMEDIATE PANEL(S)



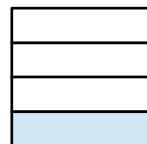
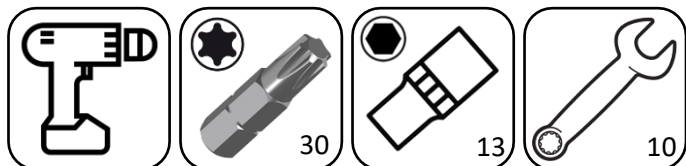
x8
Screws : Self-drilling
TB Torx 6,3x25

OR

! OPTION tandem

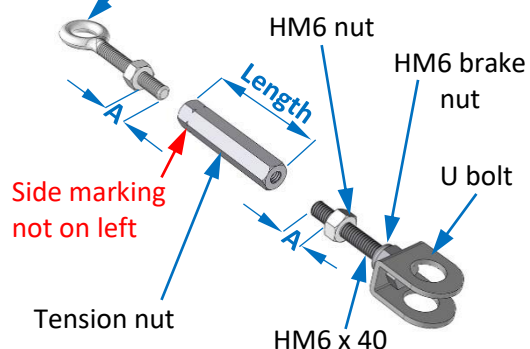


Installing the bottom panel



Assemble the turnbuckles

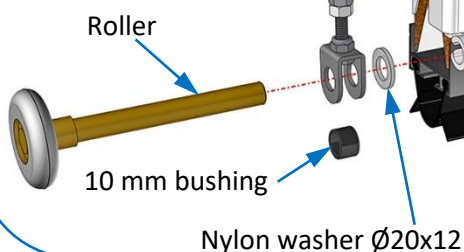
Cable equipped with turnbuckle eye and nut (not on left)



Length	A
30 mm	12 mm
50 mm	15 mm

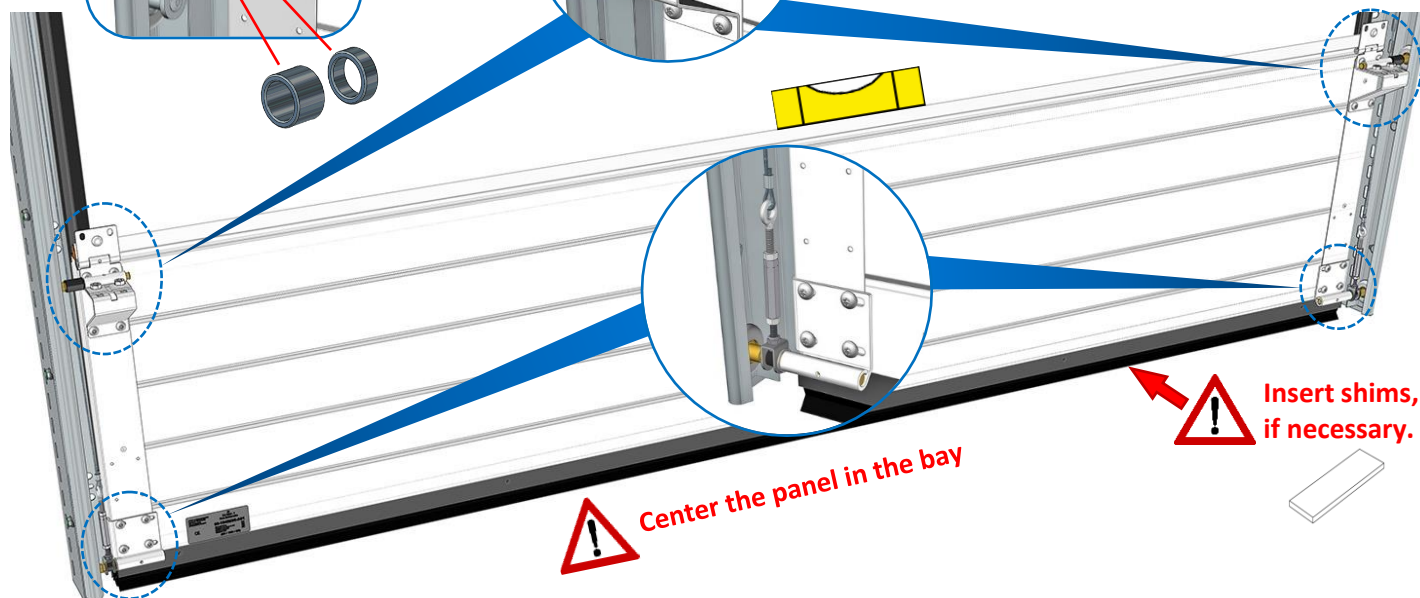
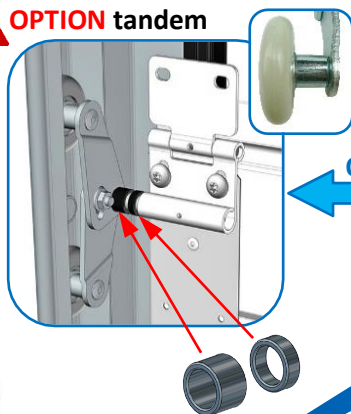
Assemble the turnbuckles

Cable equipped with assembled turnbuckle

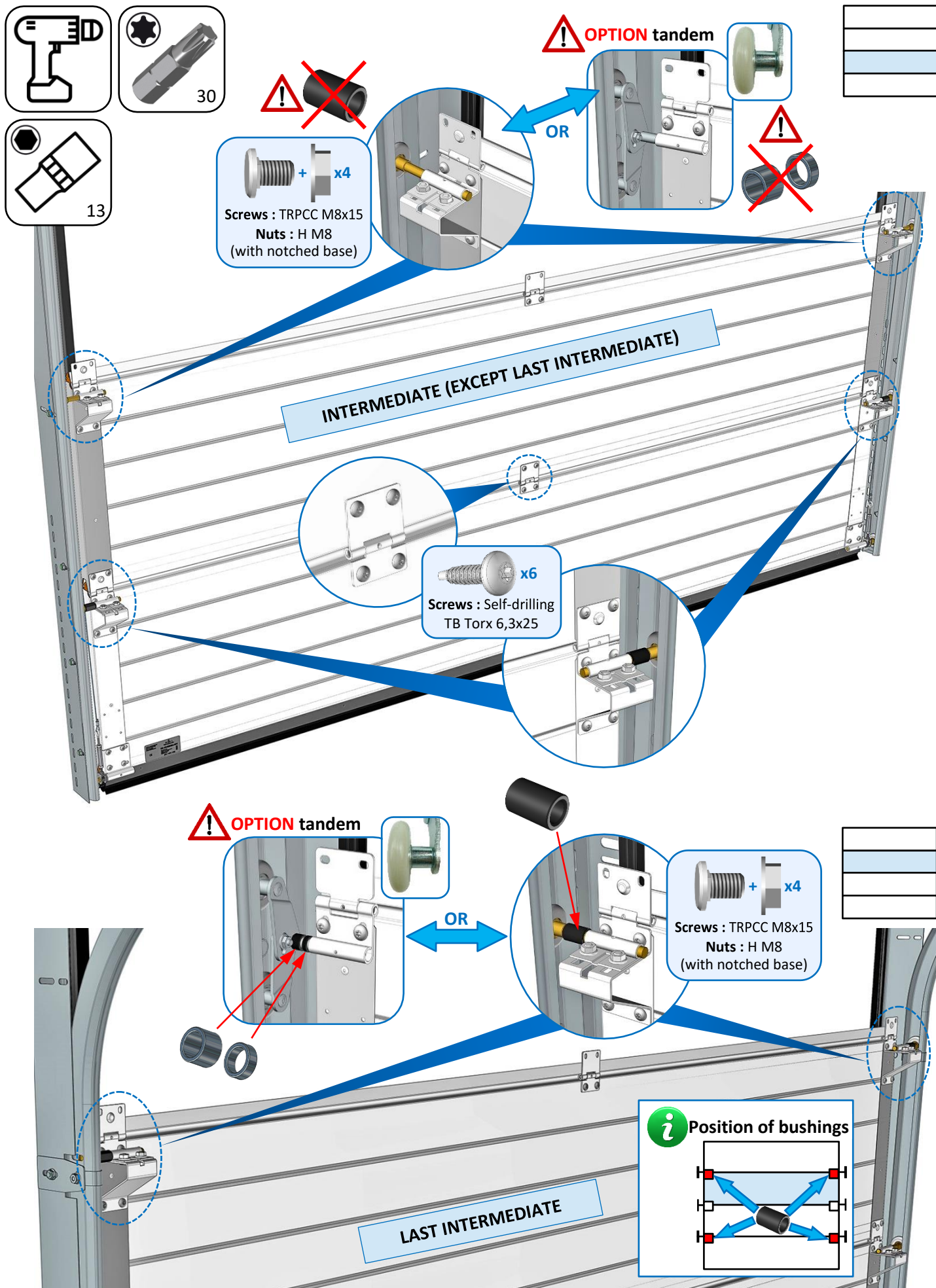


! The turnbuckle eye must be adjusted in an identical manner for each cable.

! **OPTION tandem**

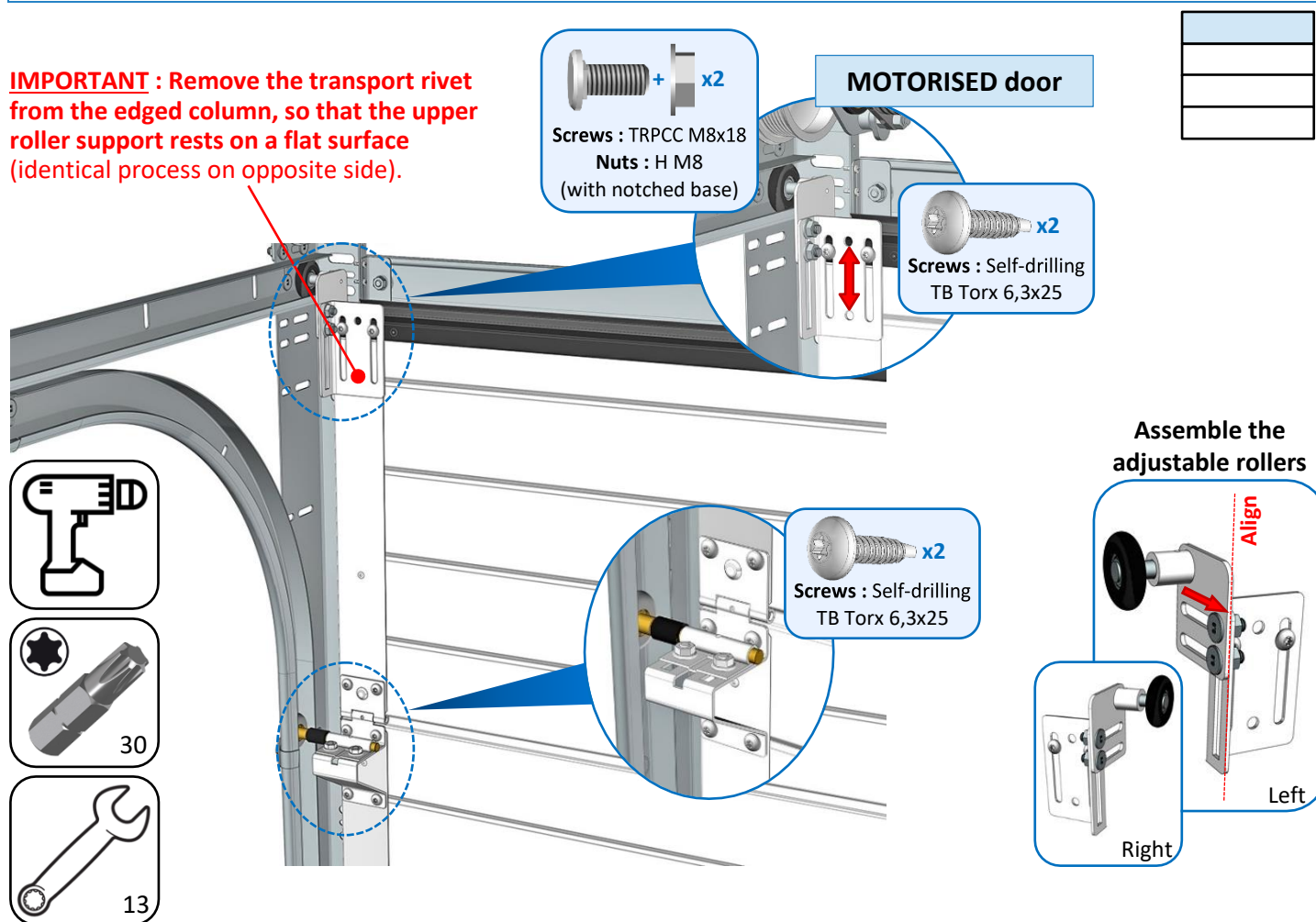


Installing the intermediate panel(s)

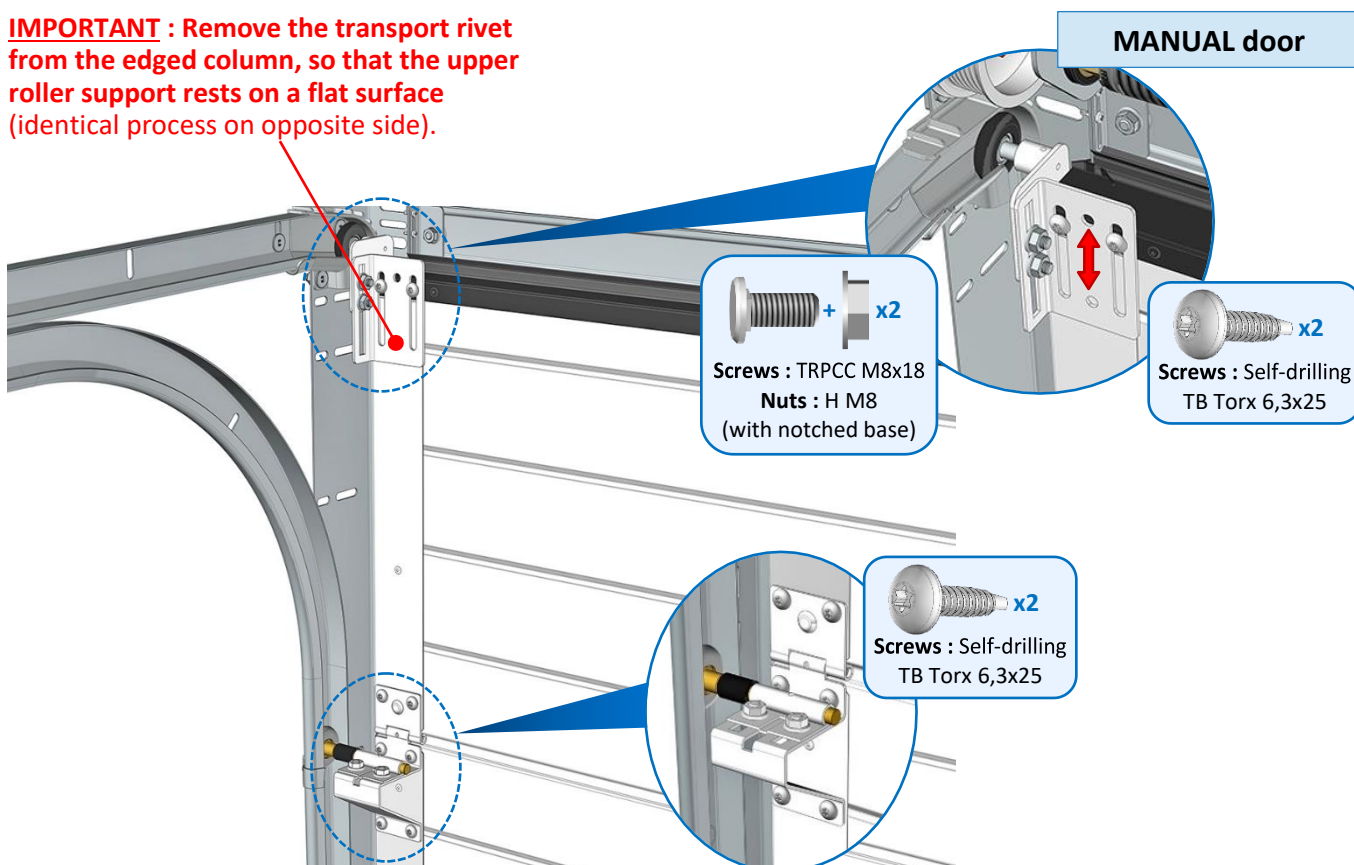


Installing the top panel

IMPORTANT : Remove the transport rivet from the edged column, so that the upper roller support rests on a flat surface (identical process on opposite side).



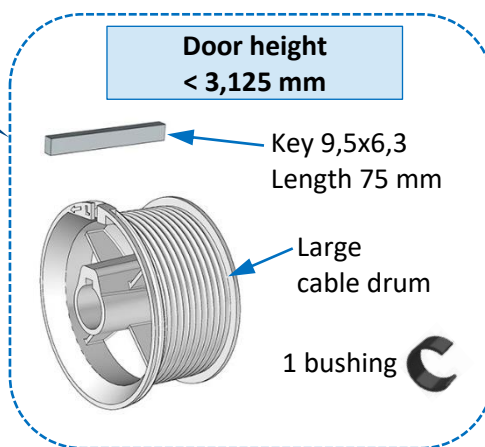
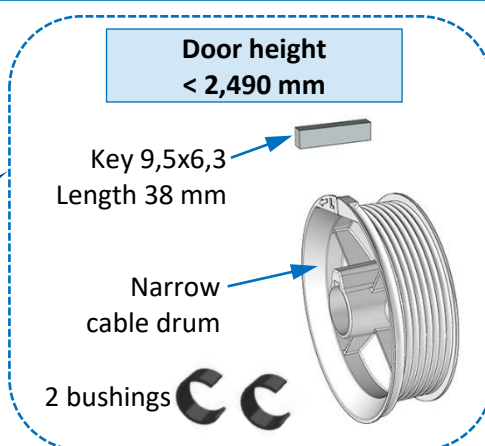
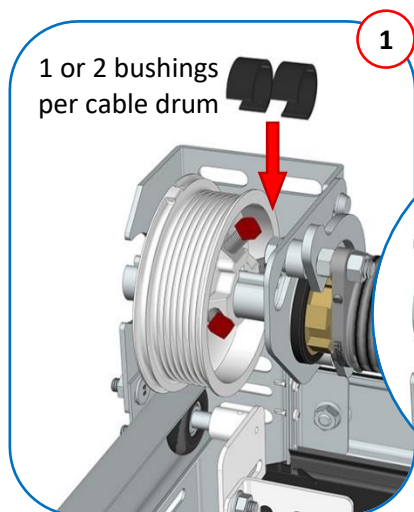
IMPORTANT : Remove the transport rivet from the edged column, so that the upper roller support rests on a flat surface (identical process on opposite side).



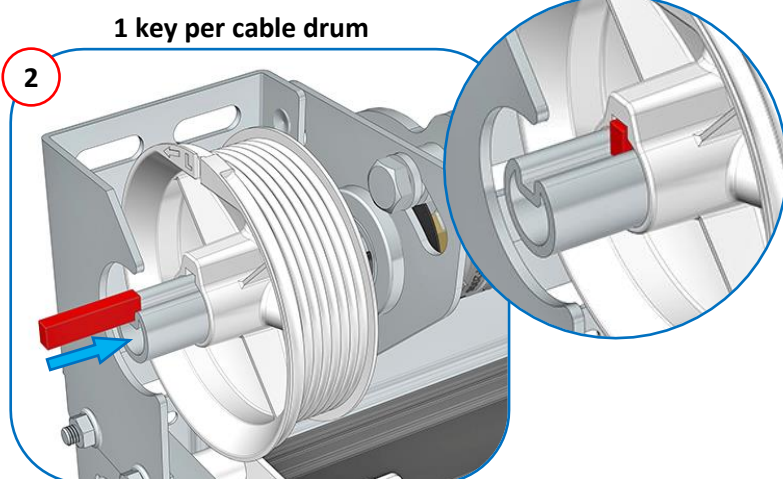
Cable installation

Positioning the cable drums

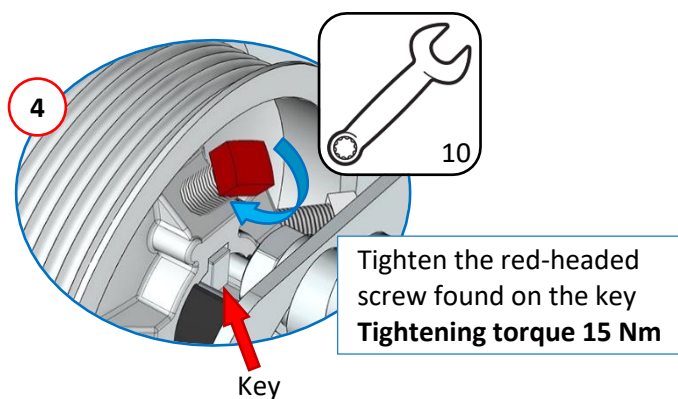
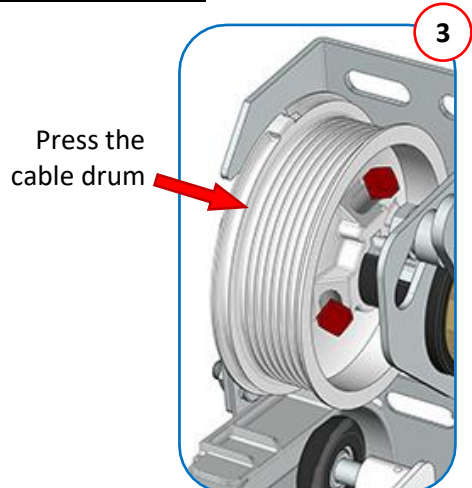
Installing the bushings for the 2 cable drums :



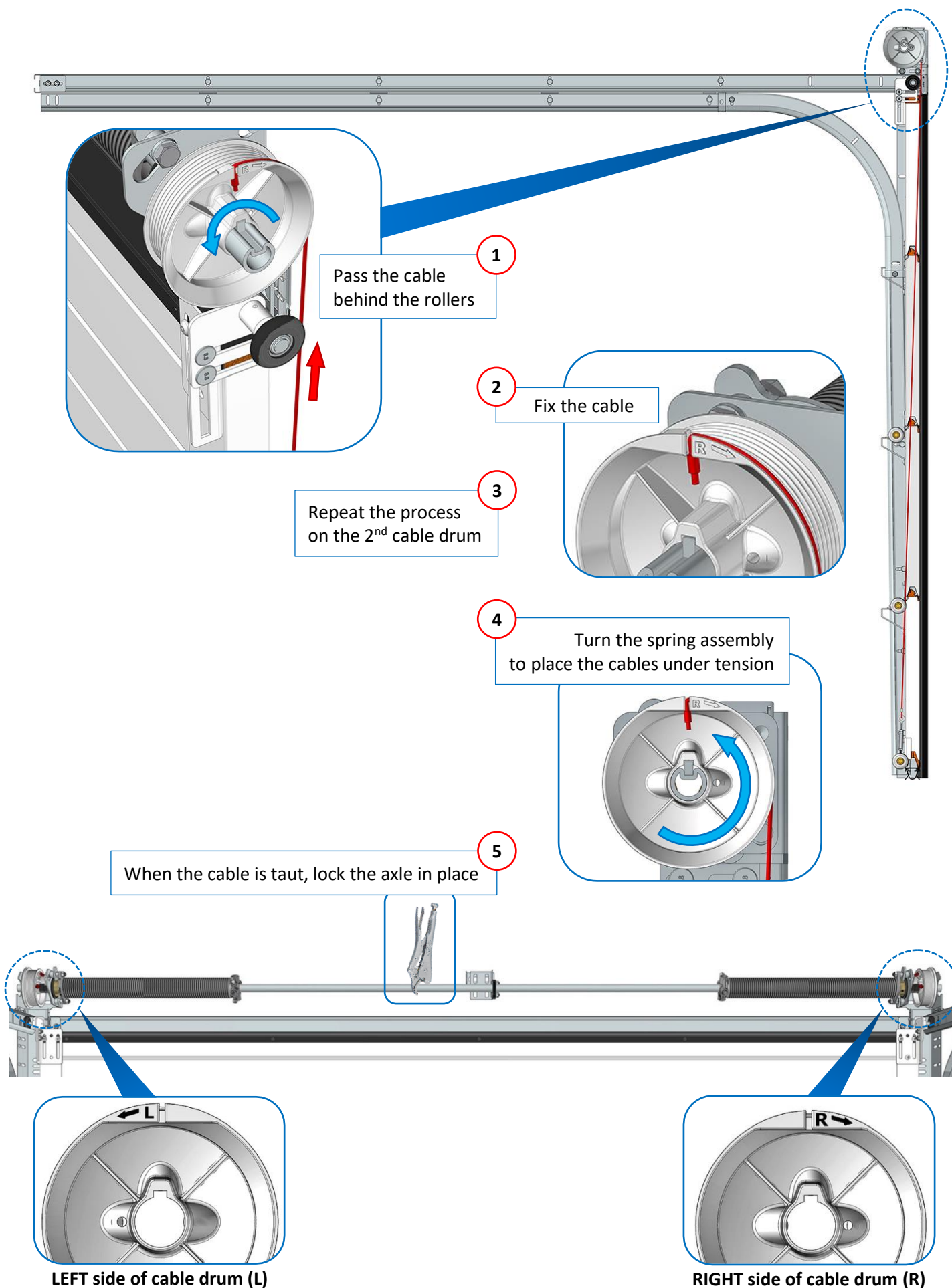
Installing the keys on the cable drums :



Block the cable drums :

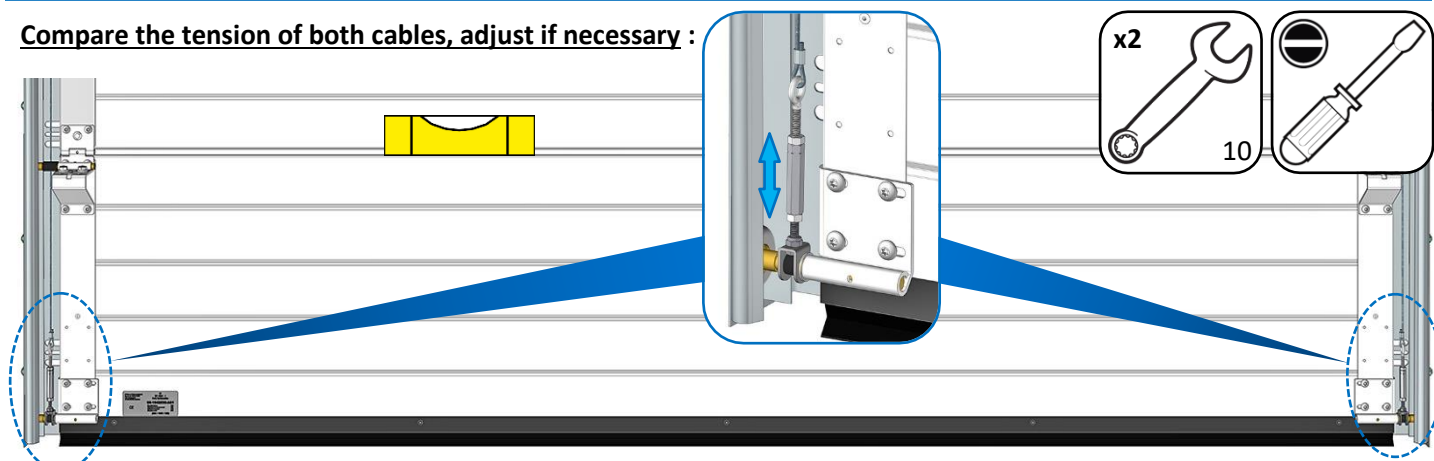


Routing the cables around the cable drums



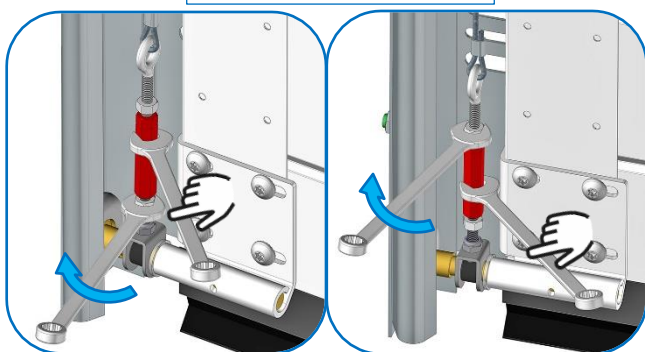
Checking the tension of the cables

Compare the tension of both cables, adjust if necessary :



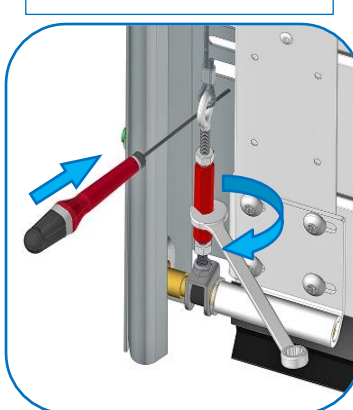
1

Loosen the nuts



2

Tension the cable



3

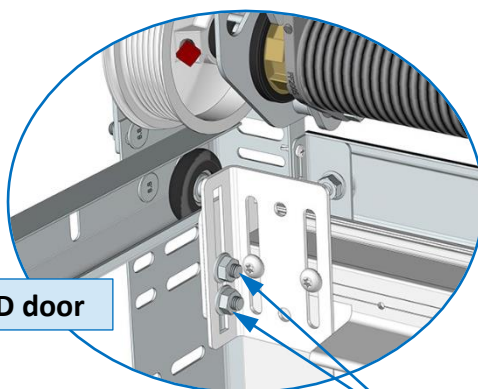
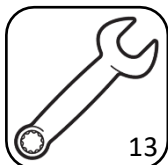
Tighten the nuts



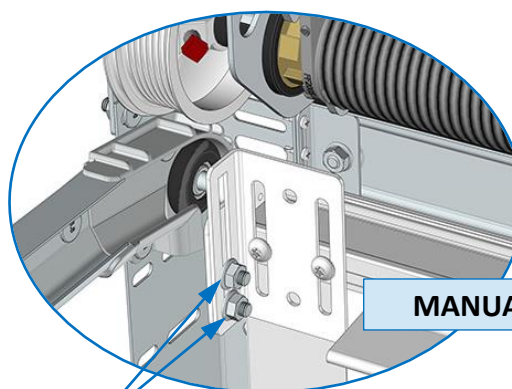
**Do not over tension
the cable, refer to**



Release the upper rollers :



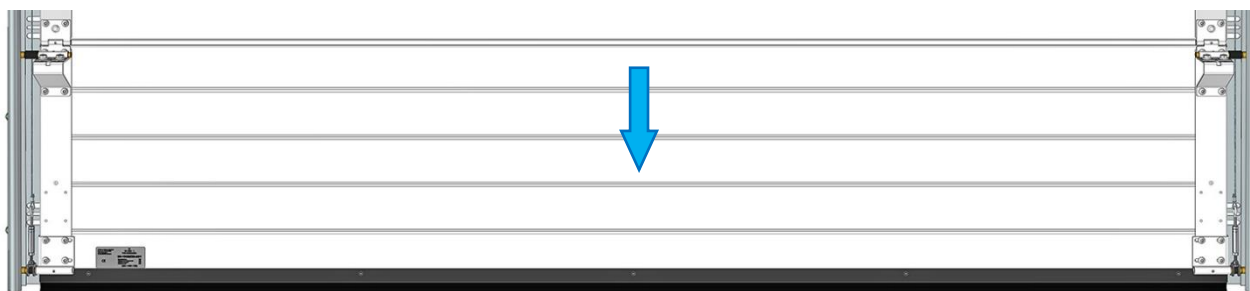
MOTORIZED door



MANUAL door

Loosen the nuts

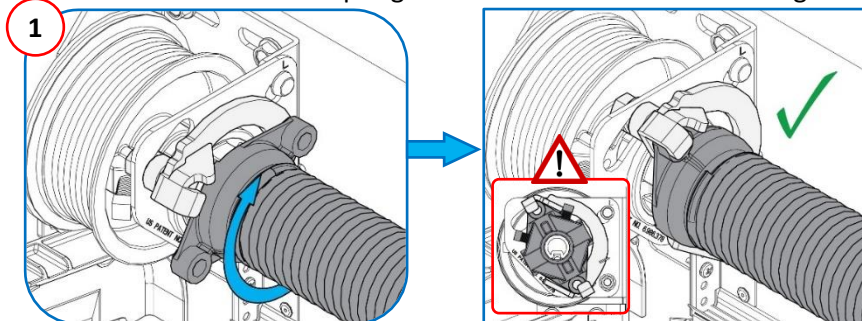
Remove the shims and lower the shutter :



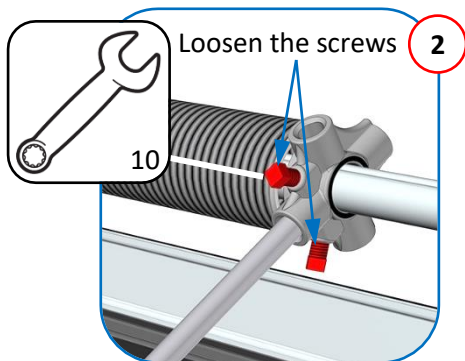
Spring adjustments

Spring tension

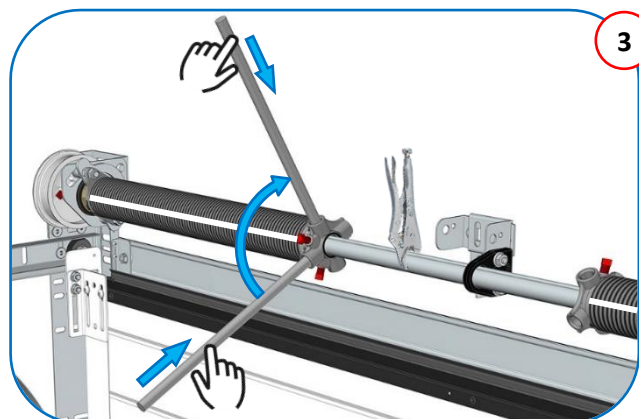
Reminder : Insert each spring into the 2 hooks on the anti-fall guard



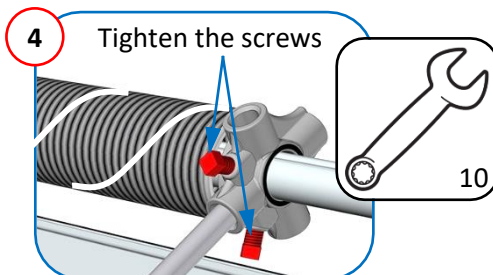
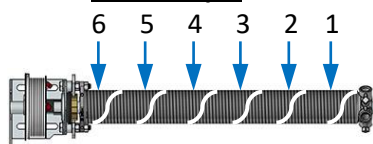
Check both springs are positioned correctly inside the anti-fall guard supports before tensioning the springs.



Tighten the bottom springs towards the top, according to the number of turns shown on the label stuck to the axle.



For example : Number of turns



Tightening torque 20 Nm

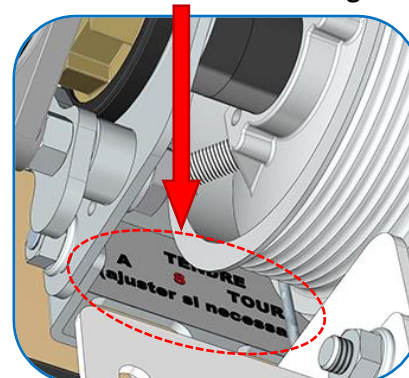
Table for number of spring tension turns

Passage height (mm)	Number of tension turns
≤ 1,820	6
From 1,821 to 1,998	6,5
From 1,999 to 2,209	7
From 2,210 to 2,347	7,5
From 2,348 to 2,519	8
From 2,520 to 2,714	8,5
From 2,715 to 2,885	9
From 2,886 to 3,000	9,5

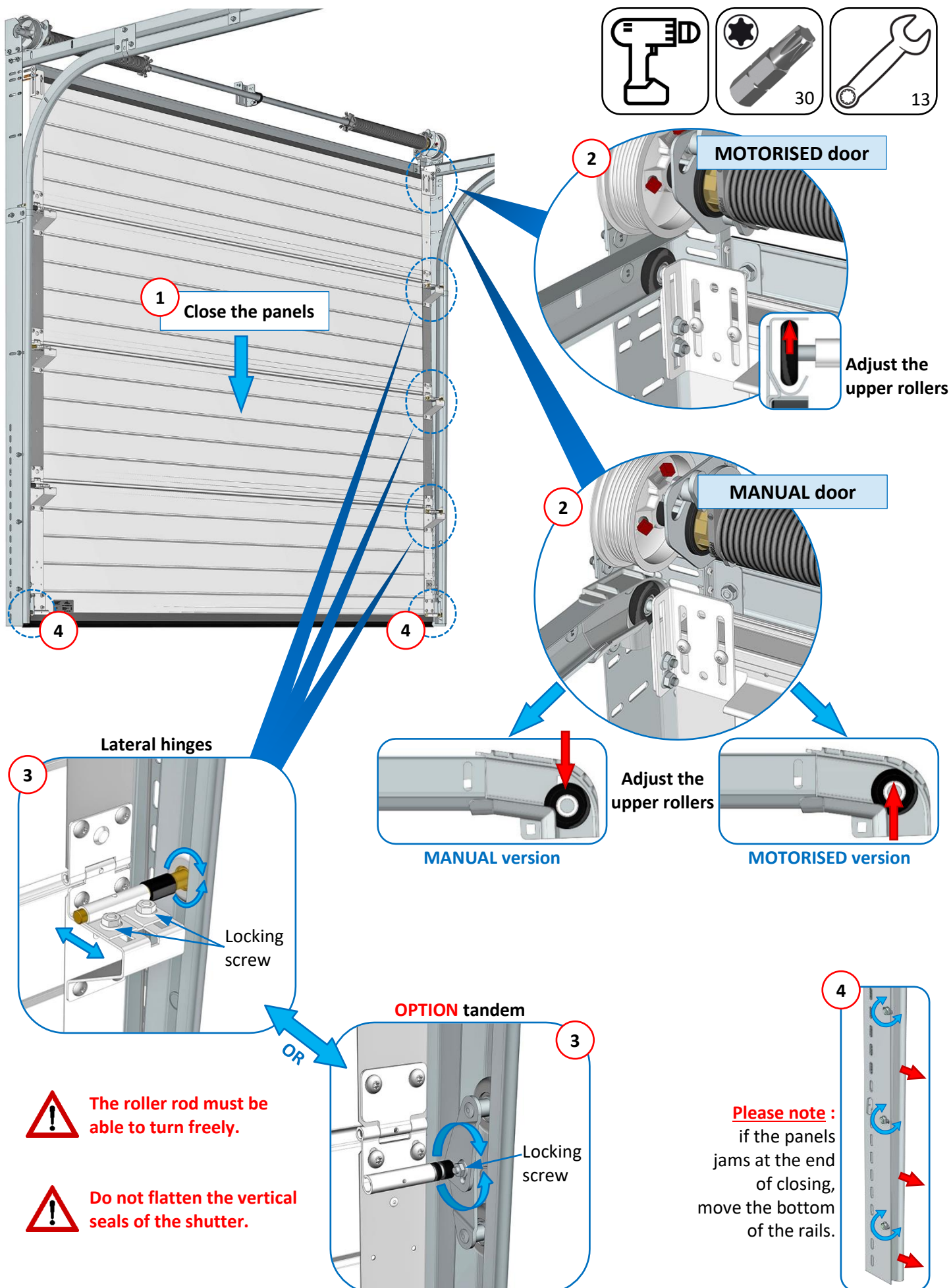


Adjust the settings if necessary

Number of turns shown on the right bearing



Adjusting the rollers



Checking the balance



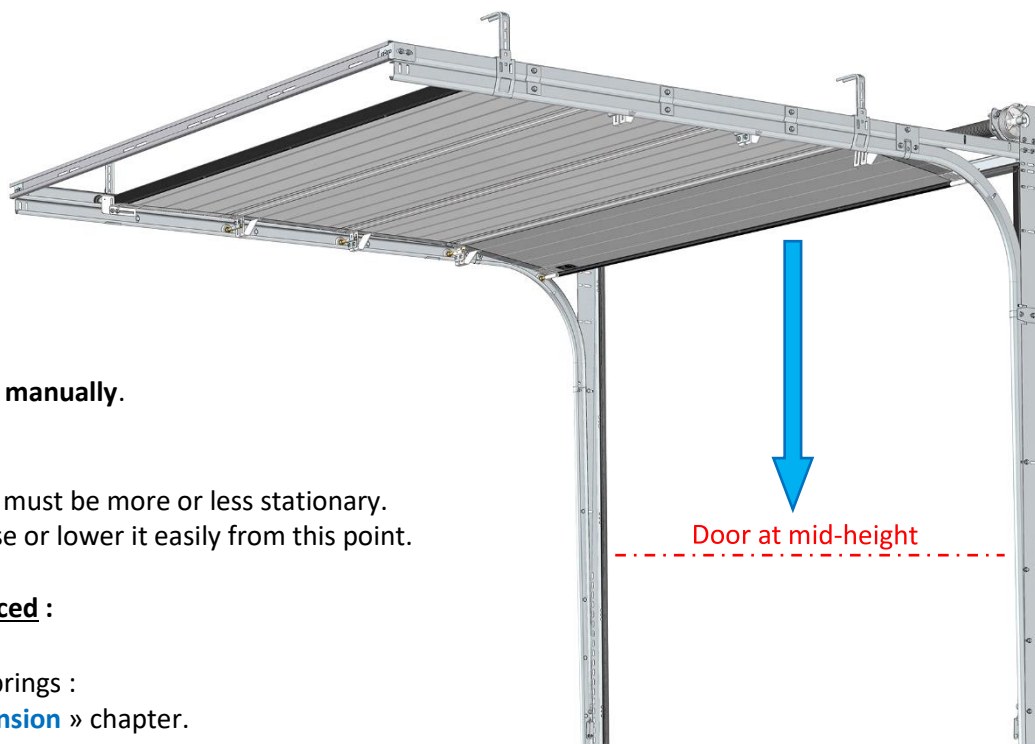
Remove the **locking pliers**.
Gently close the panels
and **operate it several times manually**.

The door is well-balanced :

- At mid-height, the door must be more or less stationary.
You must be able to raise or lower it easily from this point.

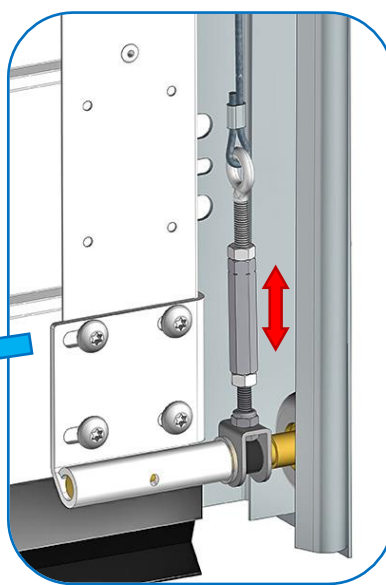
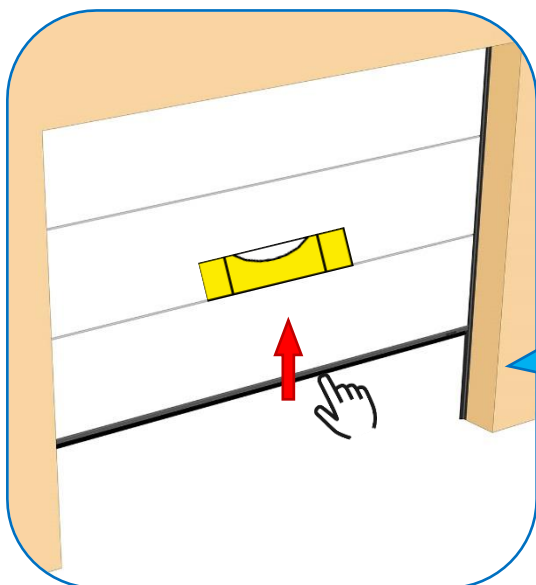
If the door is not well-balanced :

- Lower the door.
- Tighten or loosen the springs :
Refer to the « **Spring tension** » chapter.



Finishes

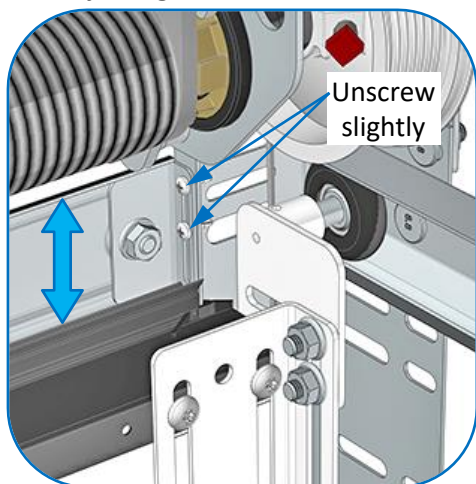
Leveling the shutter



To adjust the tensioner, refer to the « **Checking the tension of the cables** » chapter.

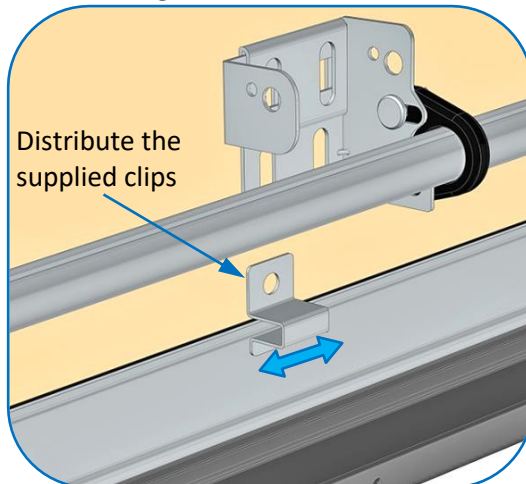
Adjusting and fixing of the cross-member

Adjusting of the cross-member

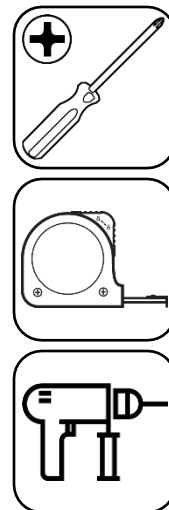


Repeat the process on the opposite side

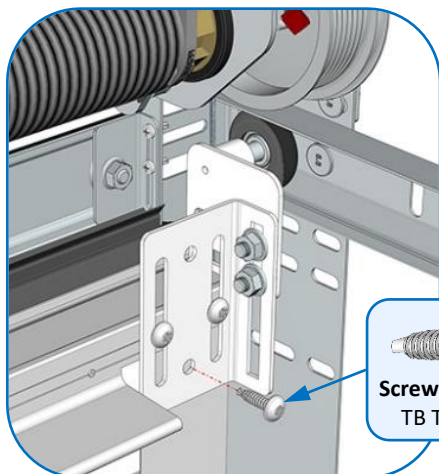
Fixing of the cross-member



Use appropriate fittings for the support (screws and pins not supplied)

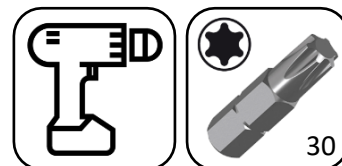


Fixing the upper roller supports



Add

Screw : Self-drilling TB Torx 6,3x25
x1



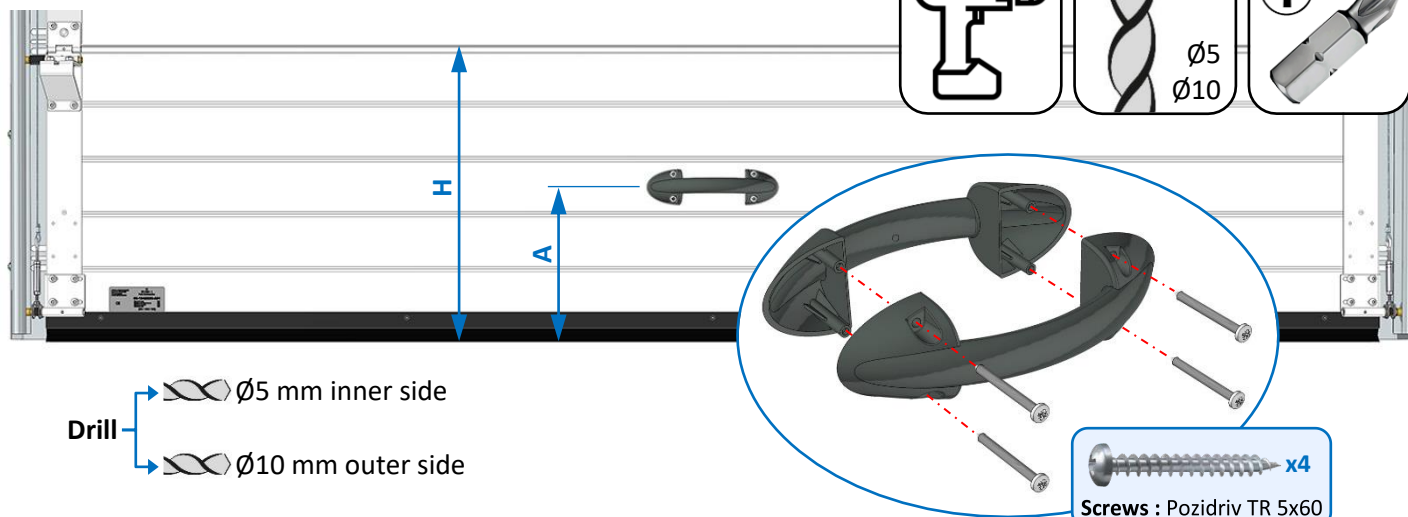
Repeat the process on the opposite side

Installation of opening stop (if manual door)

- Refer to the instruction for installation of the opening stop.

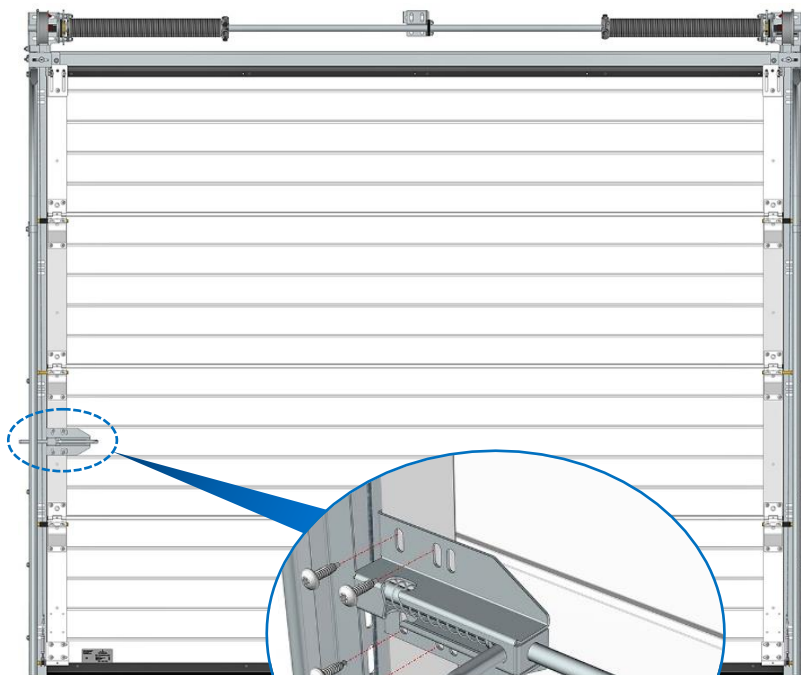
Mounting the handle

On the bottom panel : Max. handle position : $A = H / 3$



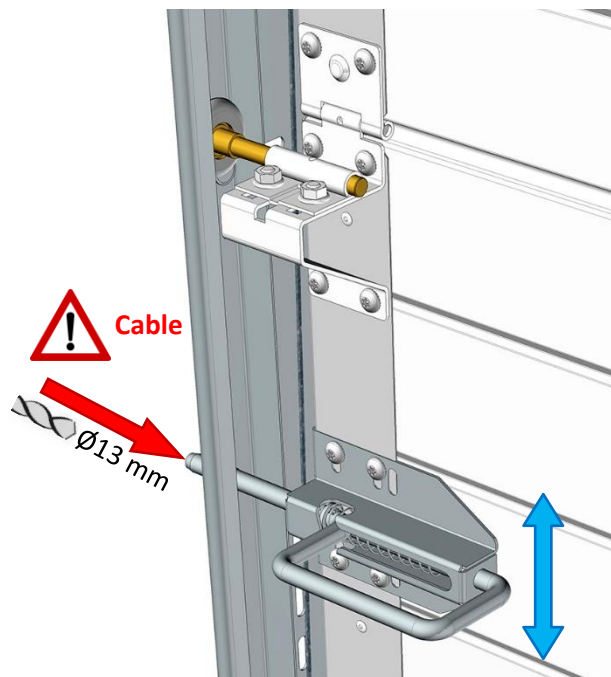
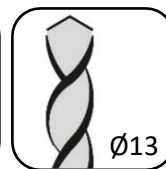
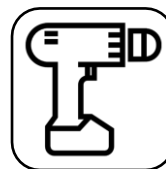
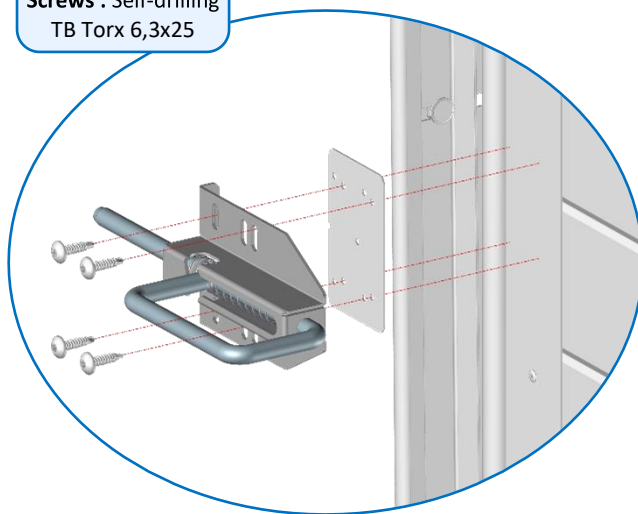
Mounting the latch (optional on motorised doors)

On 1st intermediate panel :



 **x4**
Screws : Self-drilling
TB Torx 6,3x25

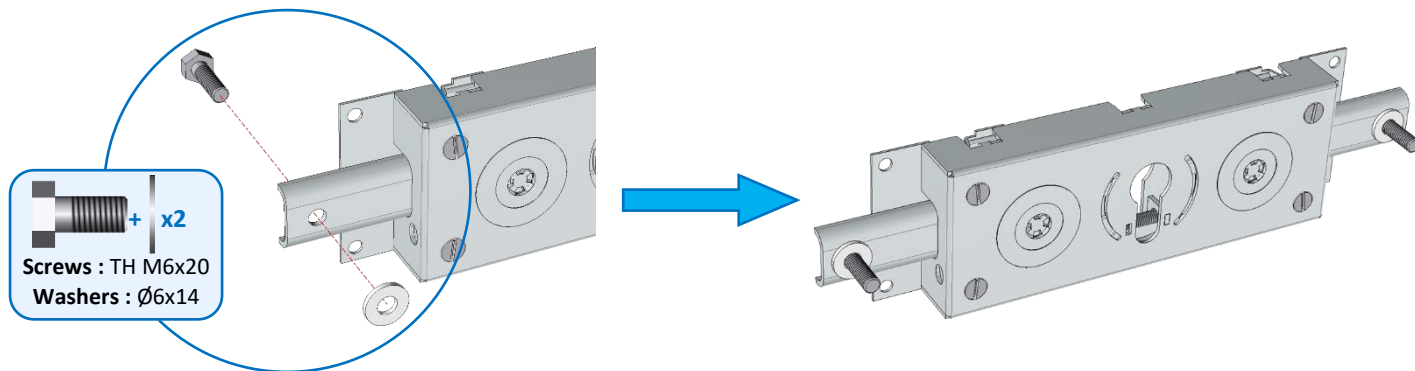
OR



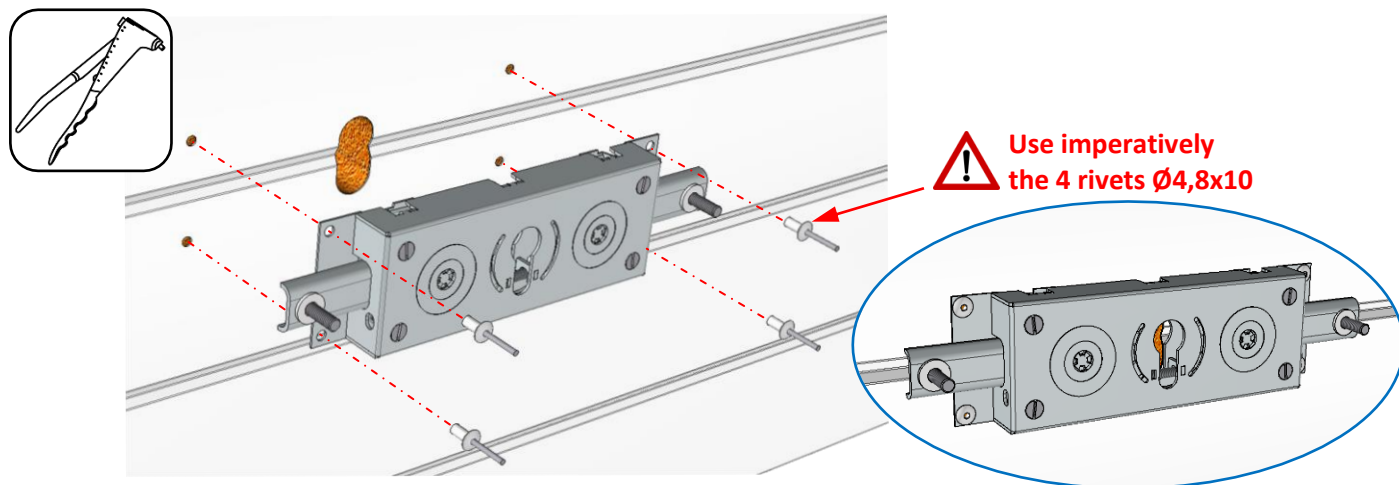
 **OPTION thermal insulation :**
Mount plate under latch.

Mounting of the lock (optional on motorised and manual doors)

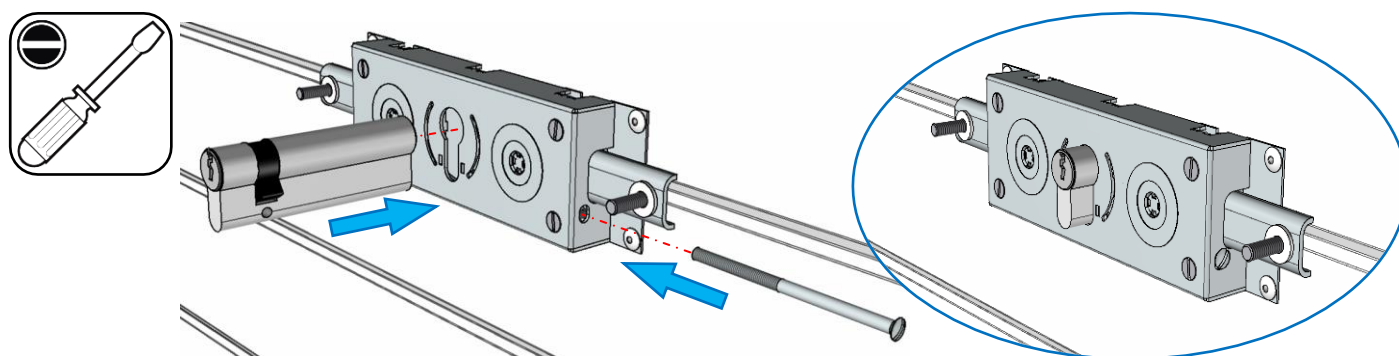
Prepare the lock :



Fixing the lock :



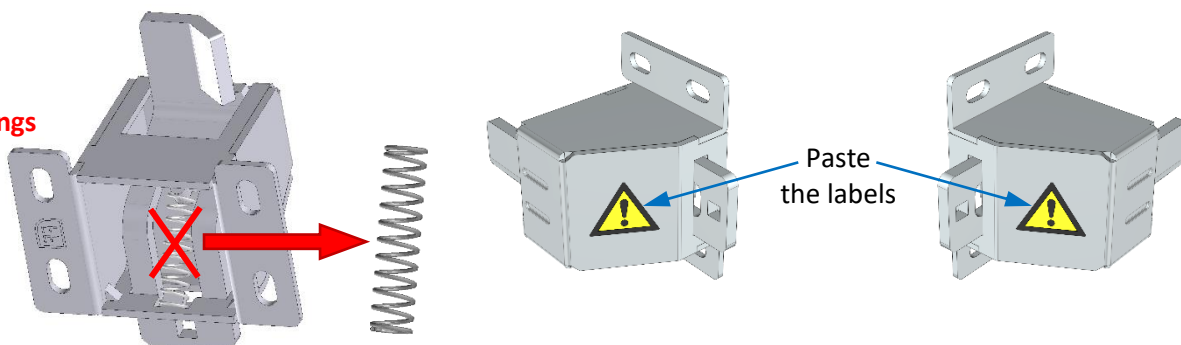
Assembling the cylinder :



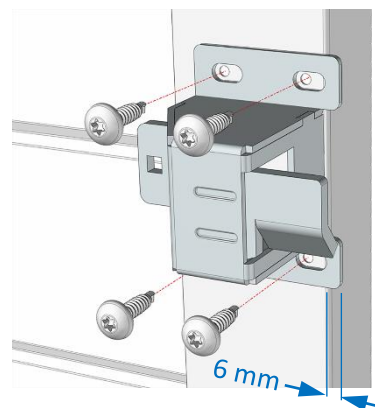
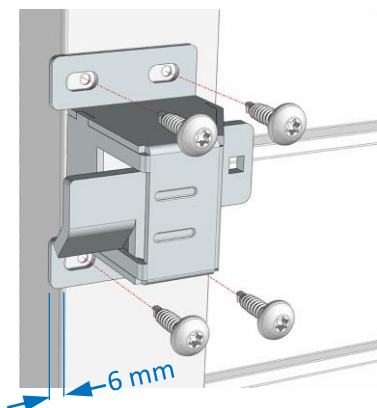
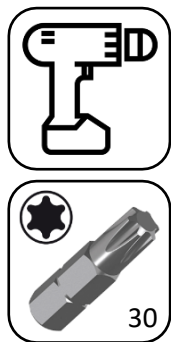
Preparing the latches (left and right) :

IMPORTANT

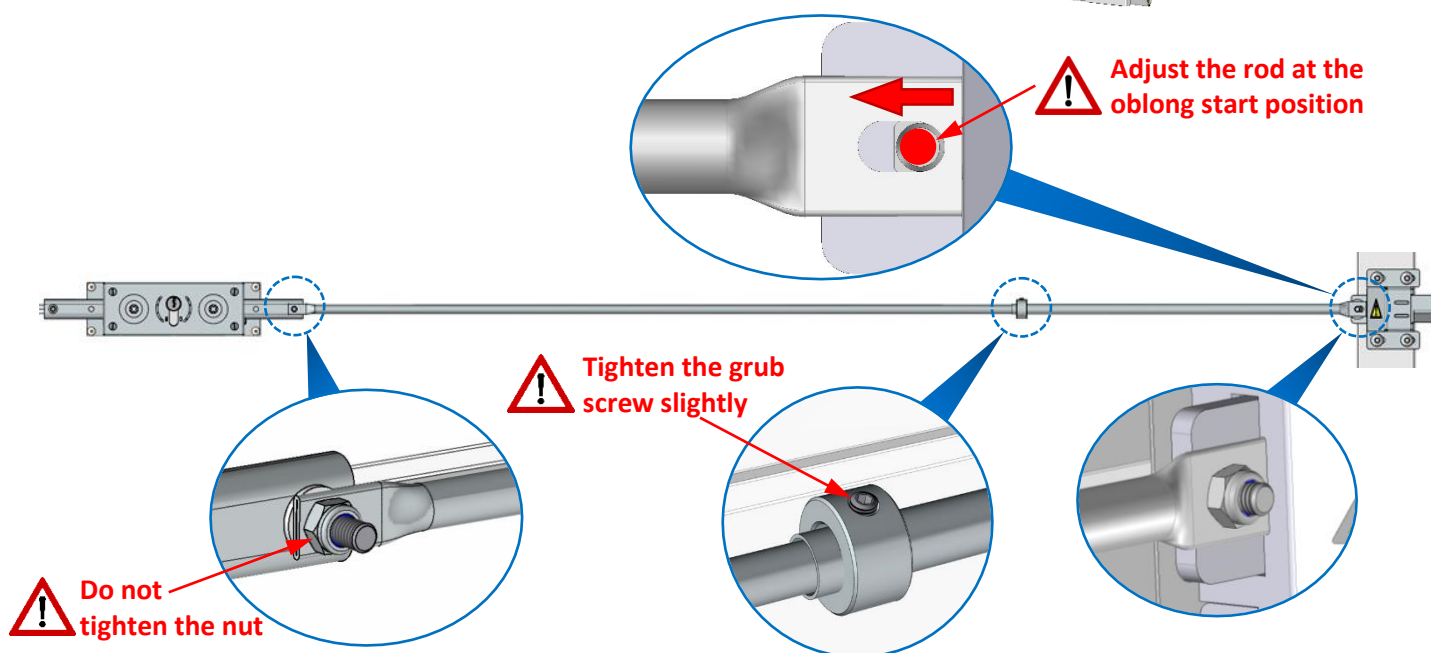
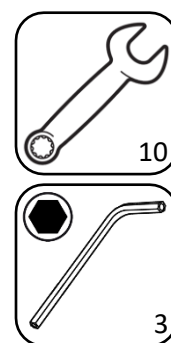
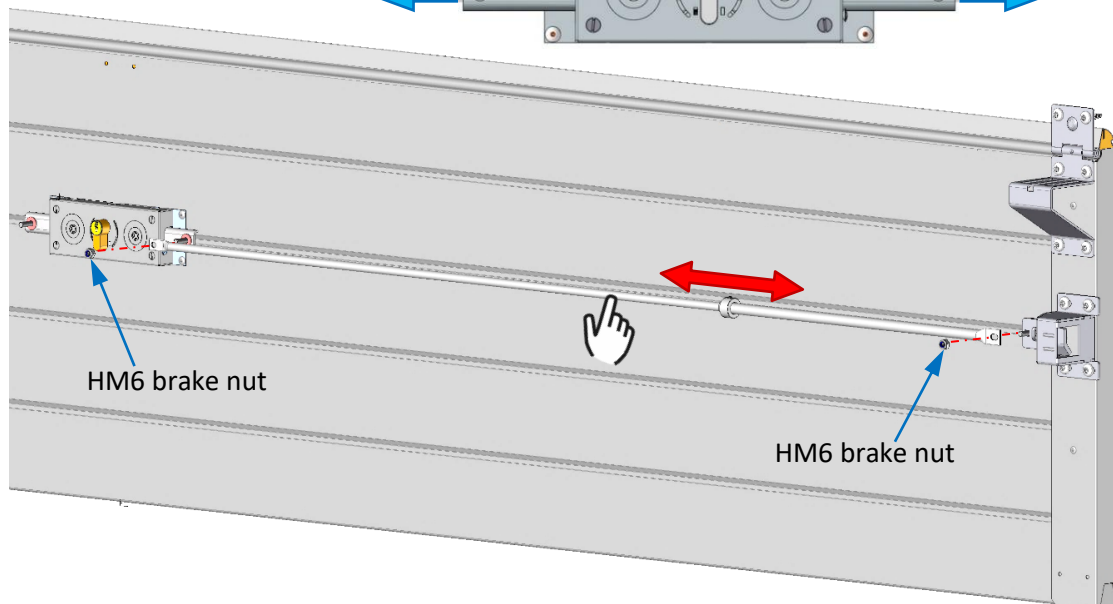
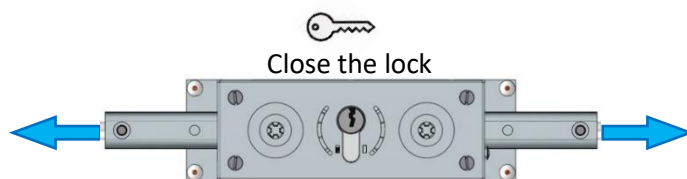
Remove the springs from the left and right bolts



Assembling the latches (left and right) :

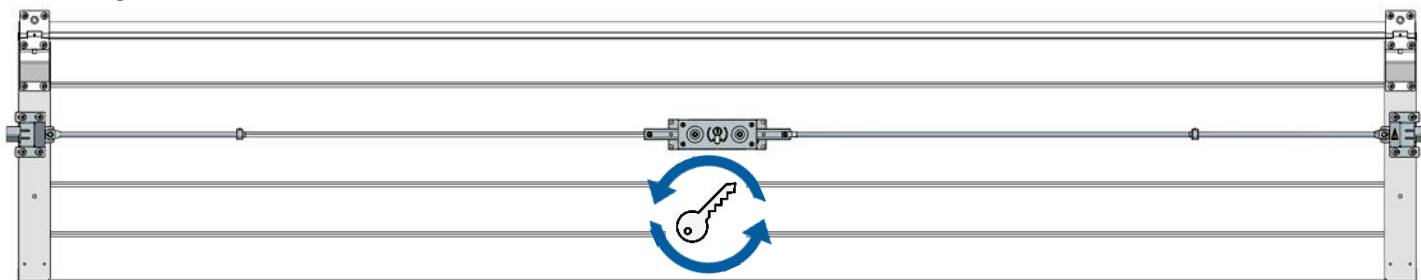


Assembling the rods :



Repeat the procedure for the second rod.

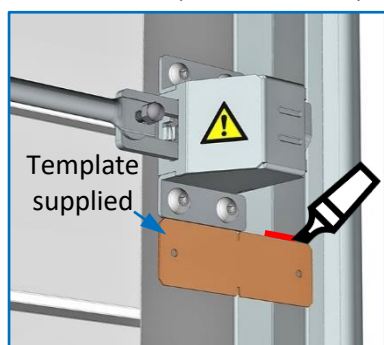
Checking the lock :



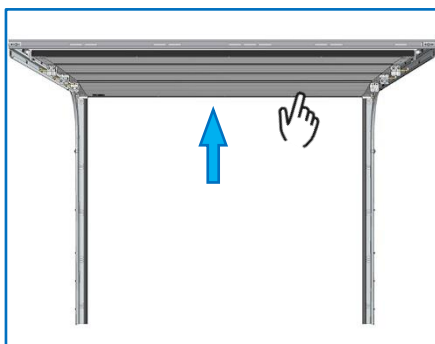
If necessary, return to the « [Assembling the rods](#) » chapter.

Positioning the strike plates :

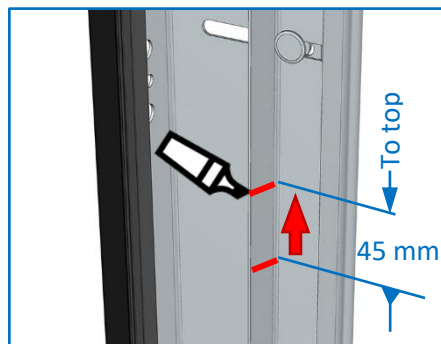
1- Mark out (on the 2 latches)



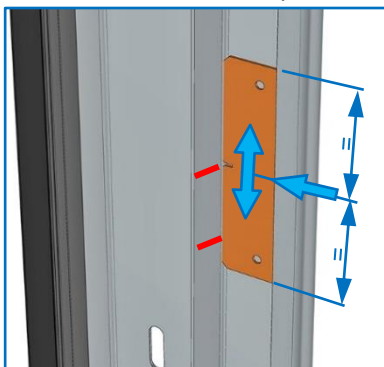
2- Open the door



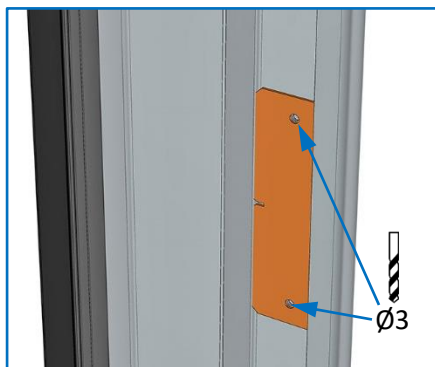
3- Offset the marking



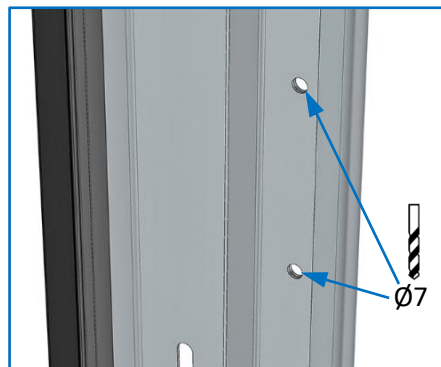
4- Position the template



5- Mark out the drill holes



6- Drill the holes



Fixing the strike plates :

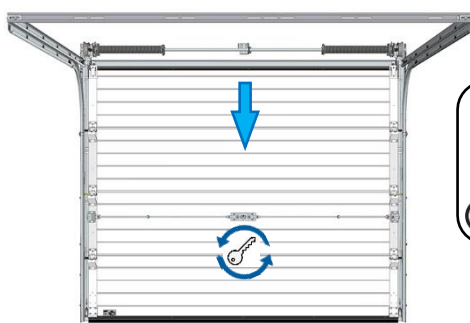


Screws : TRPCC M6x16
Nuts : H M6
(with notched base)



Do not fully tighten the nuts

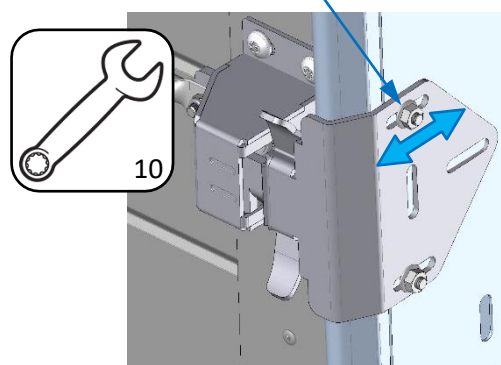
Close the door



Close the lock

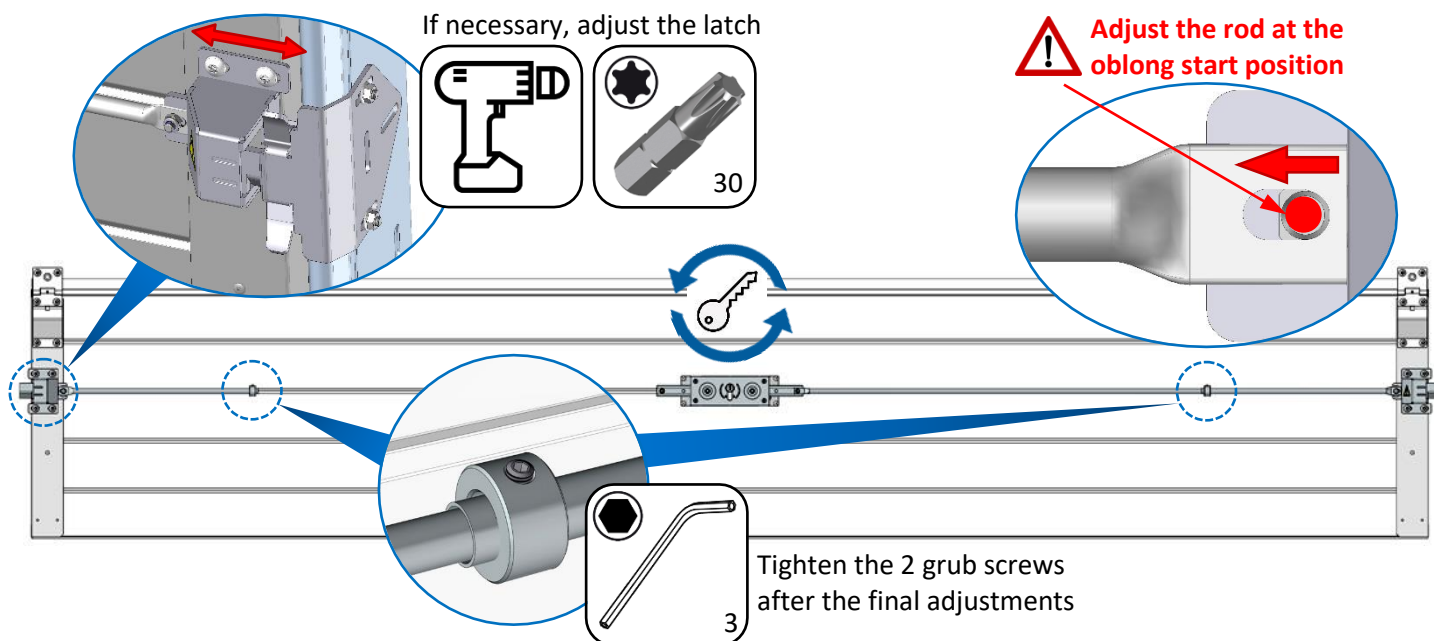
Adjust the strike plates

Tighten the nuts after adjusting



Allow some play between the strike plate and the latch

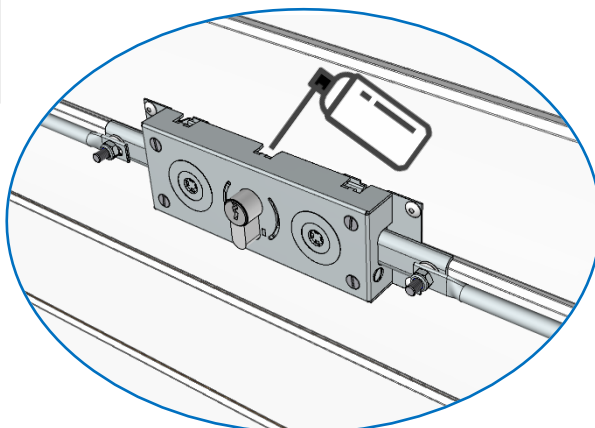
Checking the lock :



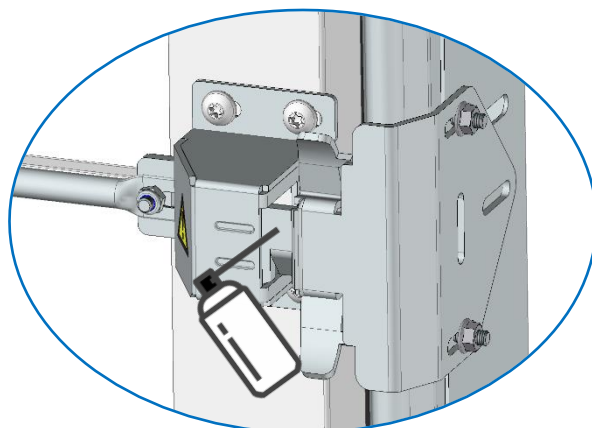
Lightly grease the lock and the 2 latches :



Lock



On the latches

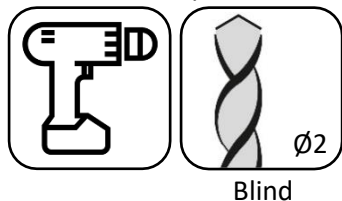


IMPORTANT :

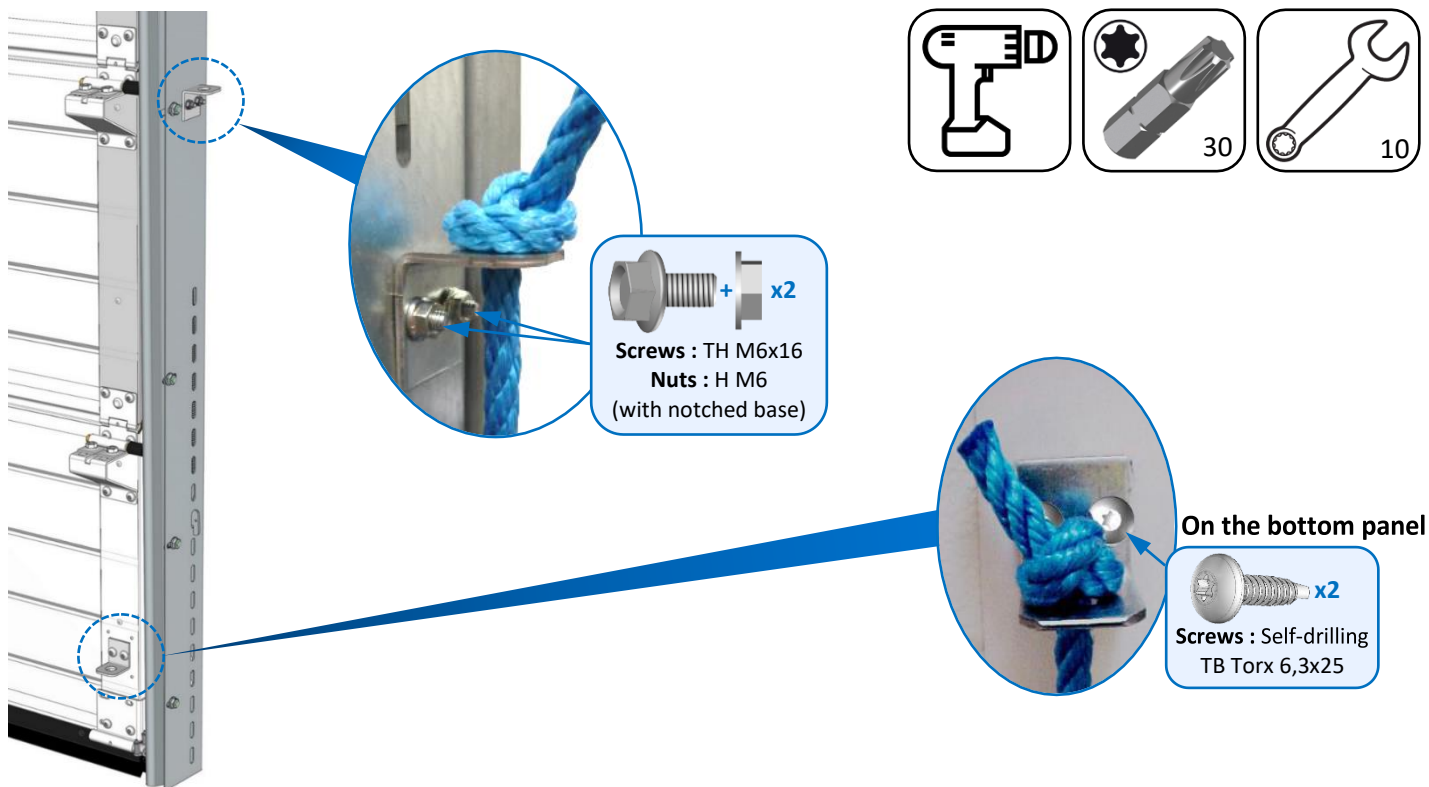
If you feel a rough spot, check the installation of the latches, rods and strike plates.

Fixing the cover plate :

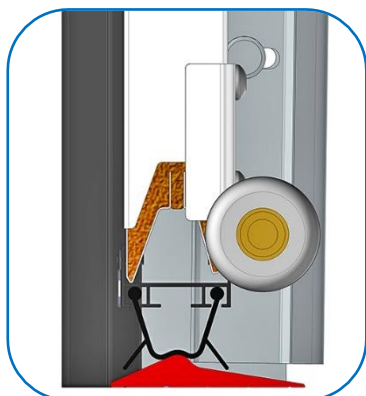
Drill the panel



Installing the pull cord (if manual door)



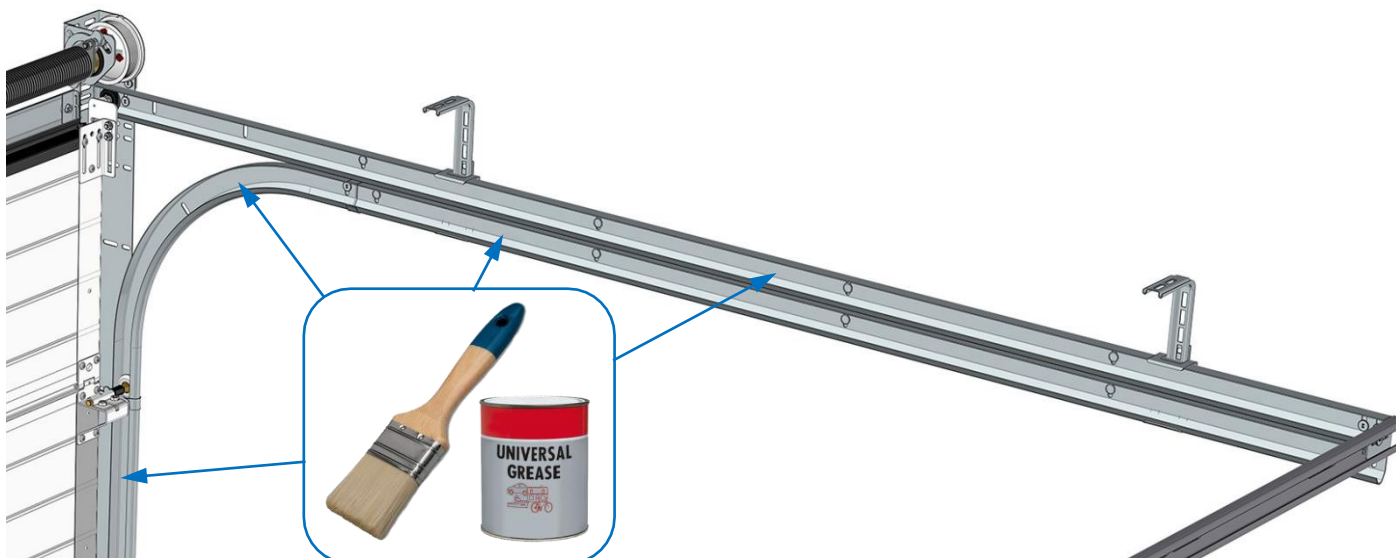
Weather seal (optional)



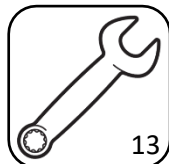
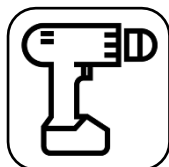
Weather seal section to be glued to the floor between the rails.

Refer to manual : Weather seal.

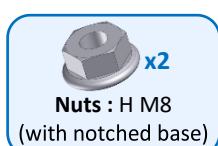
Greasing the bottom of the rails



Fixing the « SOMMER » operator to the back bar



Cut the hangers
of the operator rail

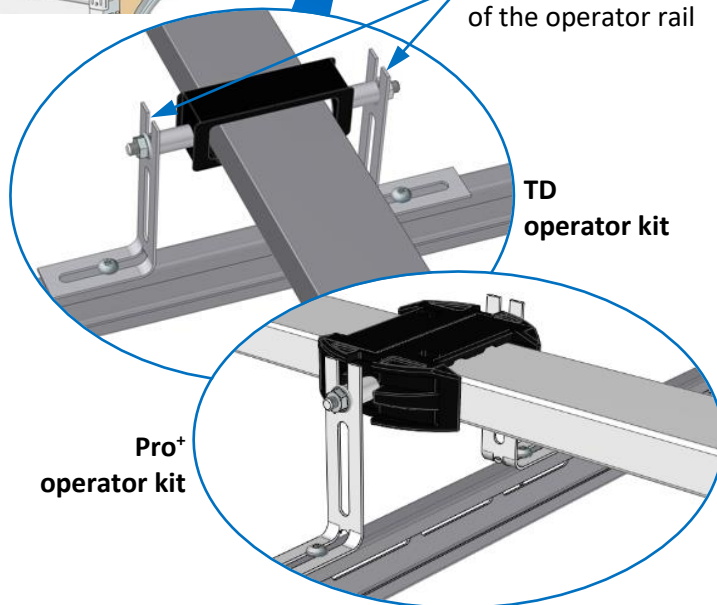


2 spacers

2 screws
TRCC M8x50



Screws : Self-drilling
TB Torx 6,3x25



**This fastening kit is compatible exclusively
with all « SOMMER » operators.**

In case of incorrect manual functioning

- Check that the vertical rails are plumb and that there is a **56 mm** gap between the rails and the edge of the panel.
- Check that the bottoms of the vertical rails are at the same horizontal level.
- Check that the horizontal rails are aligned in relation to the vertical rails and that there is a **56 mm** gap between the rails and the edge of the panel.
- Check that the horizontal rails are perfectly aligned with each other, and that they are perpendicular to the header and level.
- With the door raised to roughly 1.00 m height, check that the panels are perfectly level.
- Check that the lateral seals have not been compressed and that the sealing of the door is even.

IMPORTANT :

If the door is incorrectly adjusted and is flattened too tightly against the lateral seals, the door will not function correctly.

- Adjust the compensation setting by 1/4 turn on the springs. This will enable correct manual operation of the door.

Please note :

Difference in tolerated tension between the springs = 1/2 turn.

After being operated several hundreds of times, it may be necessary to retighten the springs slightly.



If one or more of the anti-fall guards is blocked, contact a trained installer.