

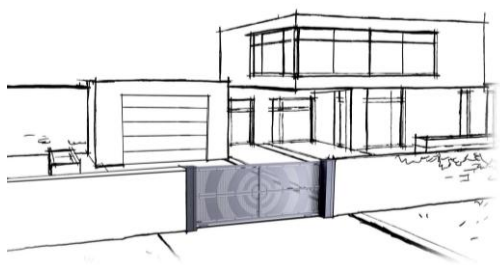
Manual No. 7415

10/25

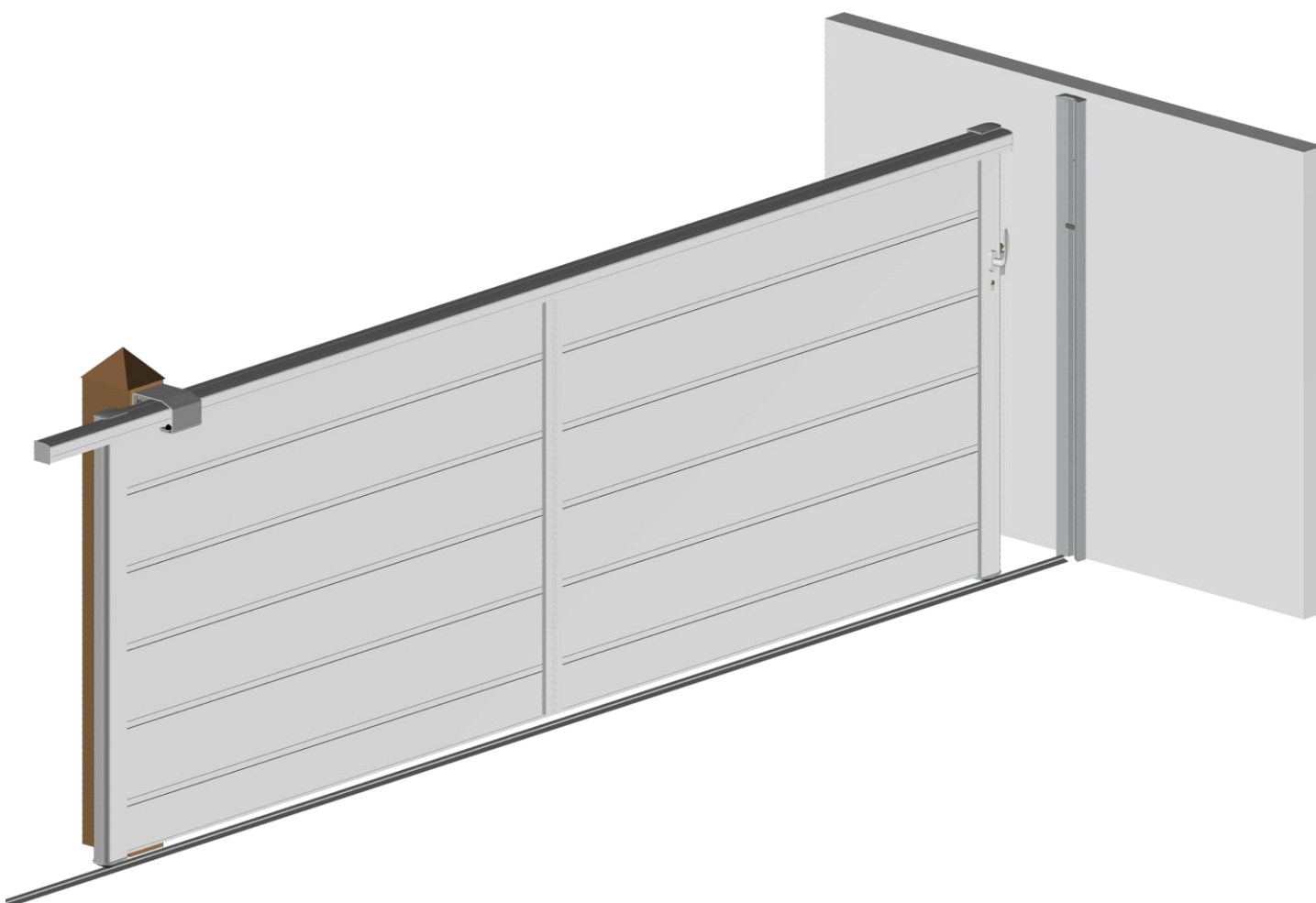
Additional INSTALLATION

Sliding gate against a wall

CREATIV range



Manual or Motorized



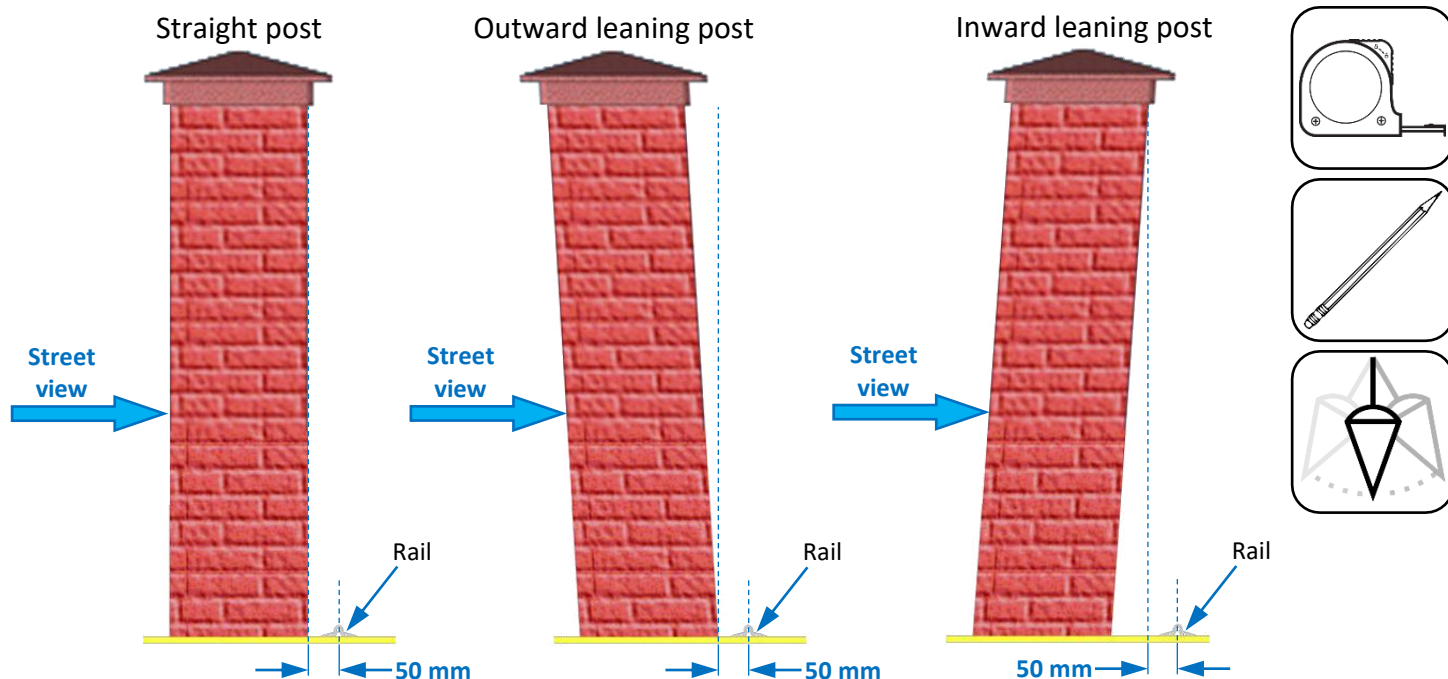
(For installers use only)

Installation

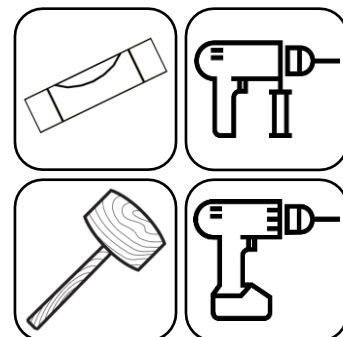
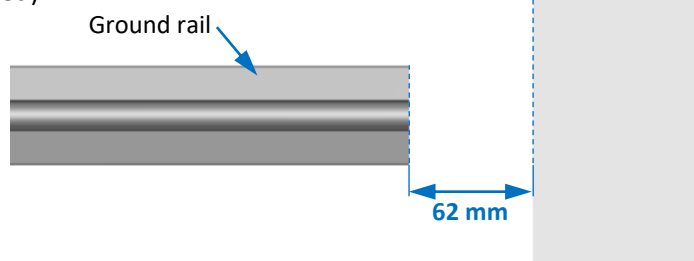
IMPORTANT, before the installation:

Check worksite dimensions, level 0, plumb of the post and the wall.
All is detailed into the CREATIV sliding gate manual of installation.

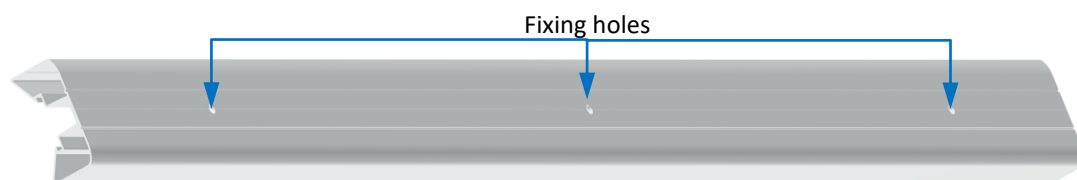
Position and fix the ground guiding rail



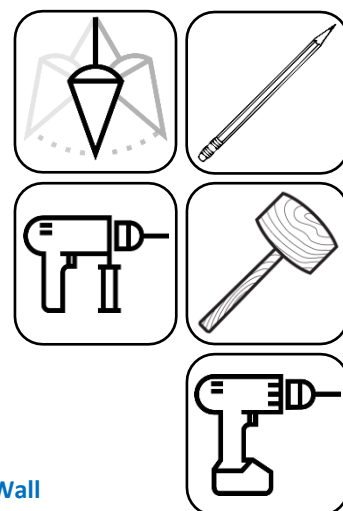
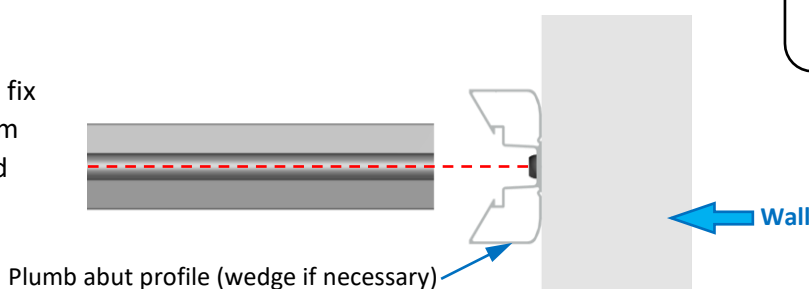
Fix the ground guiding rail with dowels of $\varnothing 8$ mm and adapted screws (not provided).



Install the abut profile



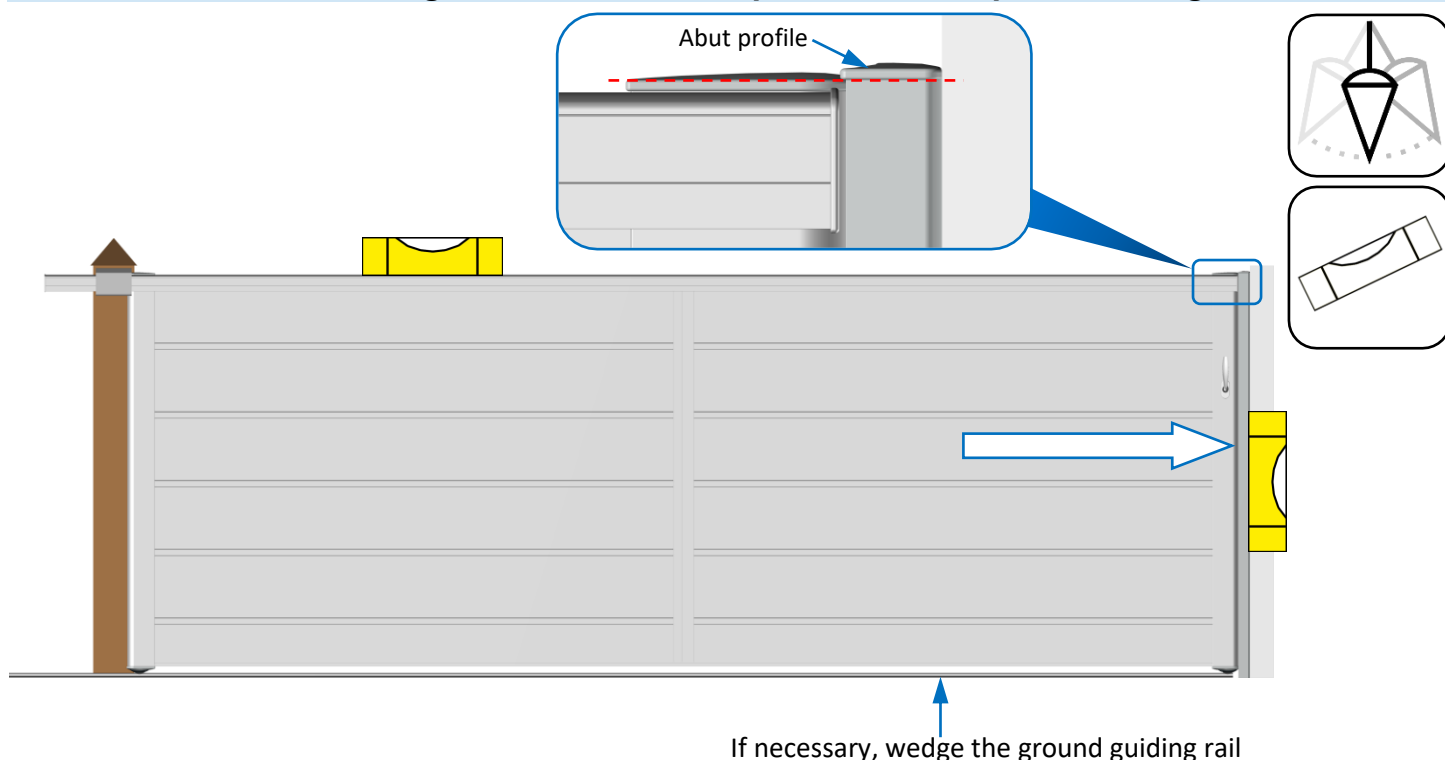
Use the ground rail axle, to fix the abut profile with $\varnothing 8$ mm dowels and screws adapted (not provided).



Follow the installation instructions for CREATIV sliding gate to:

Fix the top guiding bracket, install the gate
and fit the handle in case of a manual gate.

Check the alignment of the abut profile with respect to the gate



Follow the installation instructions for CREATIV sliding gate to:

Fit the anti-lift tab, fix the tail section in case of a motorized gate,
install the opening abutment and fix the gear rack in place.