

# Manual No. 7402

01/26

## OPTION

### Electric strike 2-Leaf gate or Wicket door



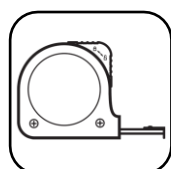
(Document reserved for installers)

# Contents

Before installation .....	2
Required equipment.....	2
General characteristics and dimensions (in mm) .....	2
Installation .....	2
Mounting and connecting the strike plate .....	2
Unlock the lock .....	4
Connection of control devices.....	5
Strike plate with a button box .....	5
Strike plate with an intercom .....	5
Strike plate with a videophone.....	6

## Before installation

### Required equipment



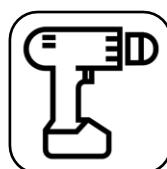
Tape measure



Phillips  
screwdriver



Pencil



Electric  
screwdriver



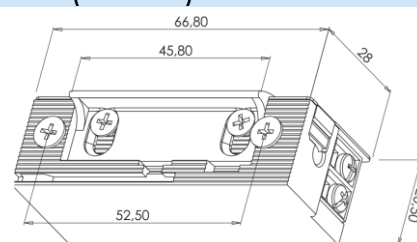
Cruciform bit



Allen keys  
2.5 - 4

### General characteristics and dimensions (in mm)

Operating voltage	12-24V AC/DC
Power consumption	12V AC/DC : 270 / 350 mA 24V AC/DC : 540 / 690 mA
Permanent power supply	12V DC (only)



## Installation

### Mounting and connecting the strike plate



Electric strike  
12V AC  
Connection  
terminals



Strike plate + Headrest



2x

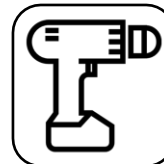


Screws : Self-drilling  
TF Cruciform 4.2x25

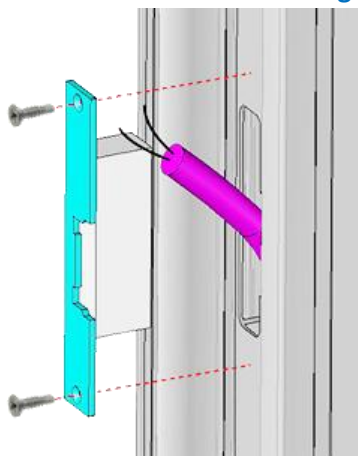
Height of sheath from floor

=

Standard handle height (1050 mm) + 20 mm

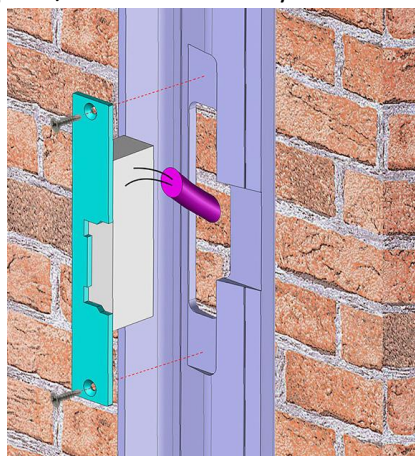


**MECA'CLAV range** : strike plate/headrest assembly



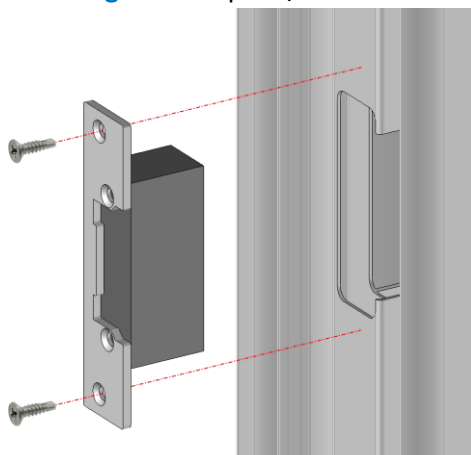
2-Leaf gate

Or



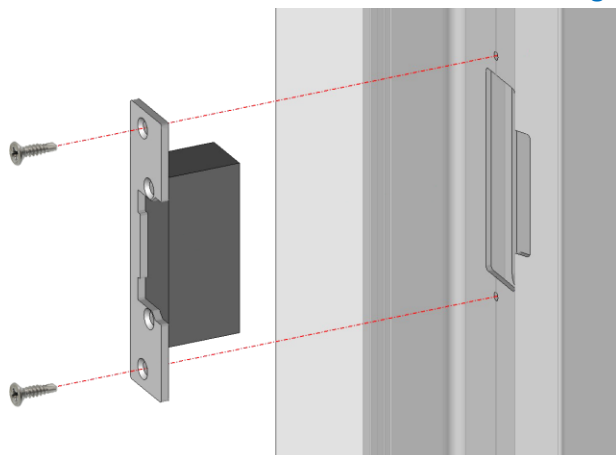
Wicket door

**ACCESS range** : strike plate/headrest assembly



Wicket door

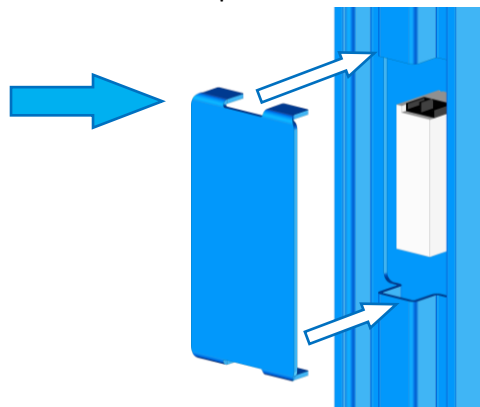
**CREATIV and INITIAL range** : strike plate/headrest assembly



Wicket door

**Note** : If wall-mounted installation

After fixing the strike plate on the beat ;  
clip the cover to the back.



## Unlock the lock

**CREATIV and INITIAL range :** The steps below are not required ; the lock has already been factory unlocked.

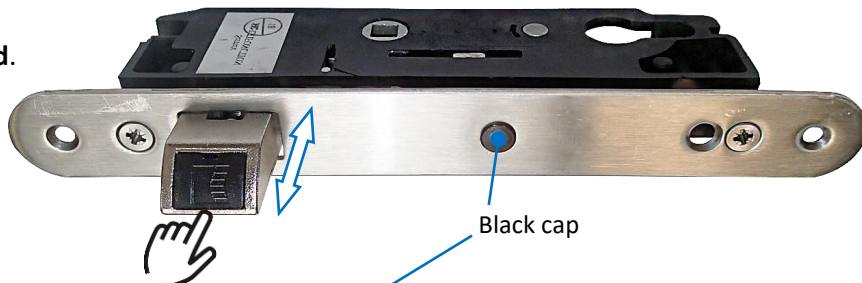
### MECA'CLAV range :

At the reception of the gate, the handle as well as the latch of the lock are blocked.

**Perform the following steps, to switch to electric strike :**

1. Open leaf, unlock the lock with key.

**Note :** Handle and latch are no longer locked.



2. Remove the black cap ;  
a hex screw must be visible.



3. Loosen this screw by about 6 turns.

**Note :** As soon as it is sufficiently unscrewed, she will turn in the void but not come out of her dwelling.

4. Lock the lock with its key.

**The handle is locked and the latch is free.**

5. Put the black cap back in its place.



**The lock is activated for the electric strike.**

### ACCESS range :

At the reception of the gate, the handle as well as the latch of the lock are not blocked.

**Perform the following steps, to switch to electric strike :**

1. Open the leaf and lock the lock with its key.

**Note :** Handle and latch are locked.

2. Disassemble handle and barrel to remove lock from frame.

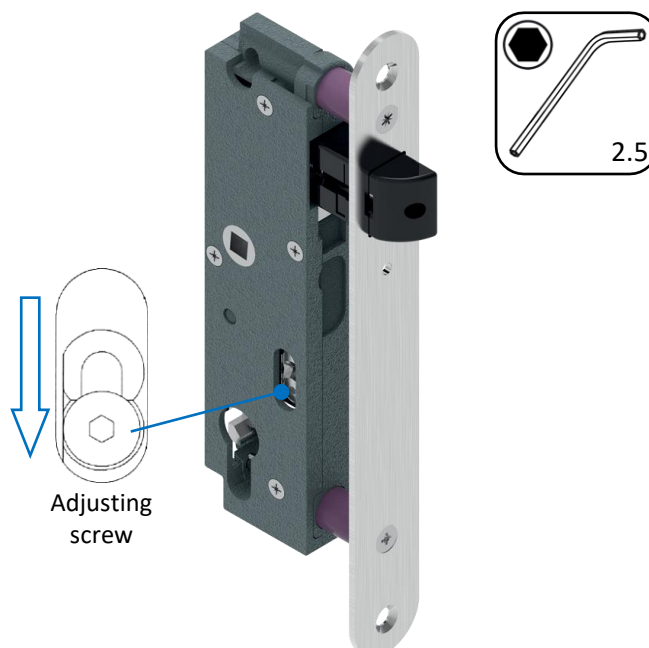
3. Lock out, loosen the adjustment screw by about 2 turns.

4. Move the metal piece down.

5. Tighten the adjustment screw.

**The handle is locked and the latch is free.**

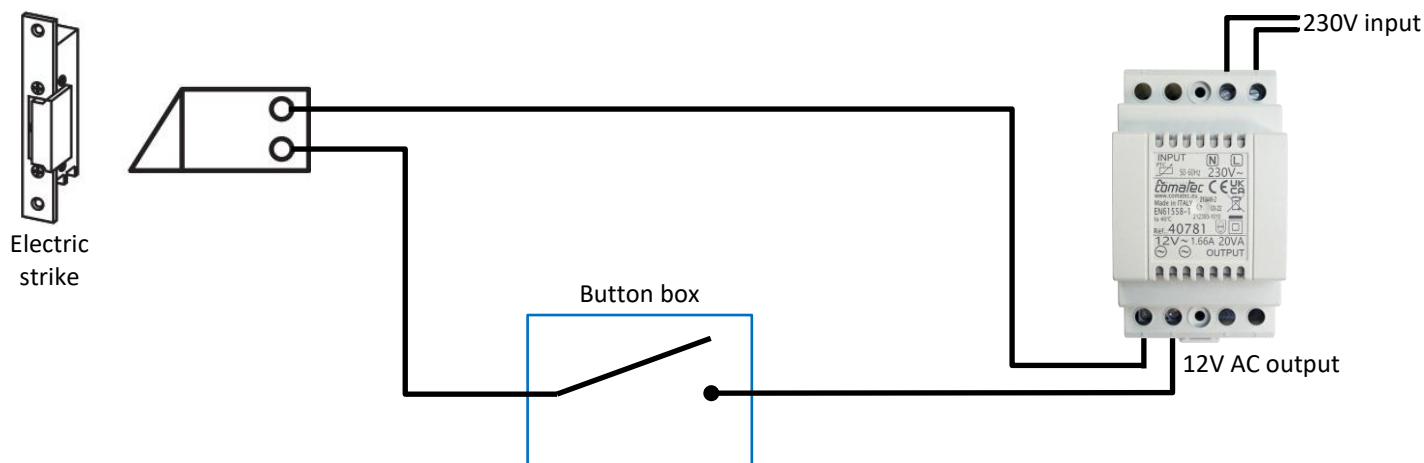
6. Reassemble the lock in the frame as well as the barrel and handle.



**The lock is activated for the electric strike.**

# Connection of control devices

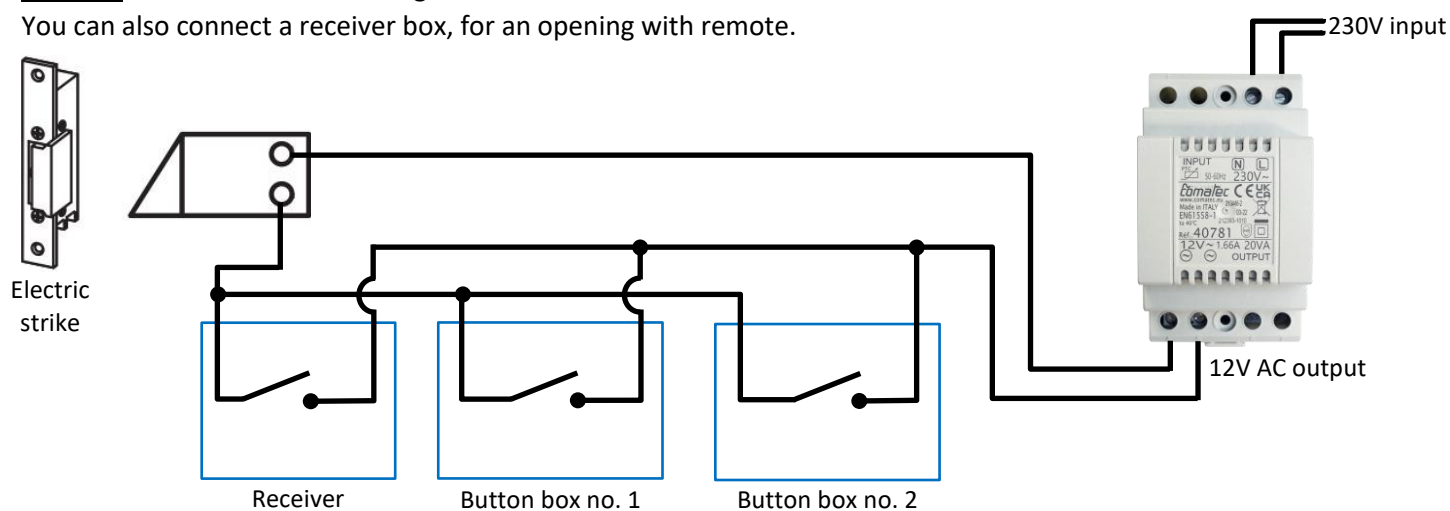
## Strike plate with a button box



**Note :** It is possible to connect 2 button boxes. For this, connect them in parallel.

**Example :** A button box near the gate and another near the front door.

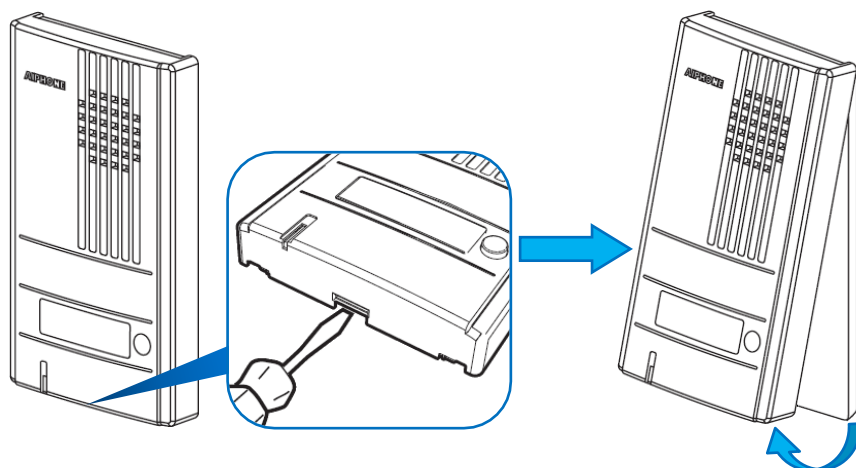
You can also connect a receiver box, for an opening with remote.



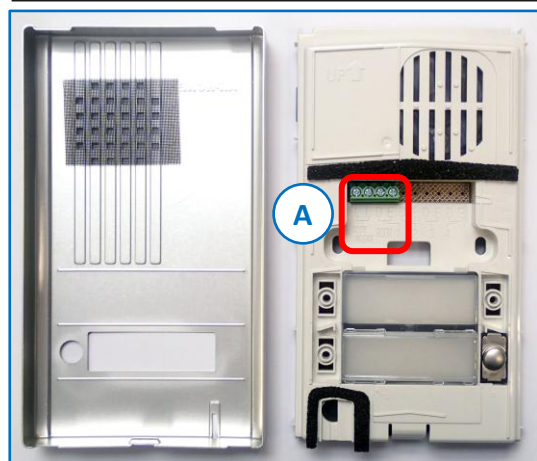
## Strike plate with an intercom



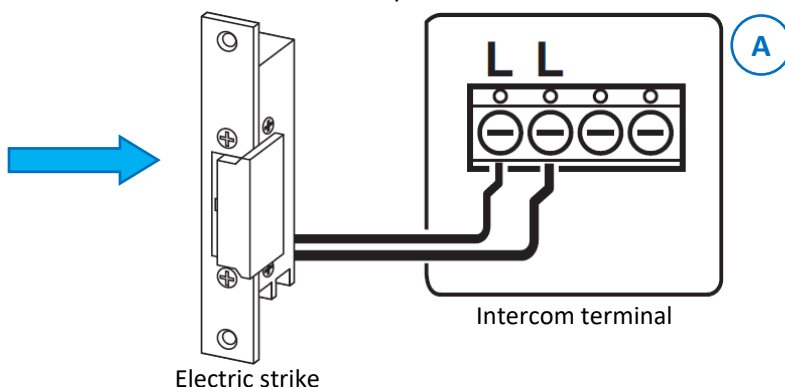
1. Press the tab at the bottom of the intercom, to remove the front face.







2. Connect the strike plate on the intercom terminal.

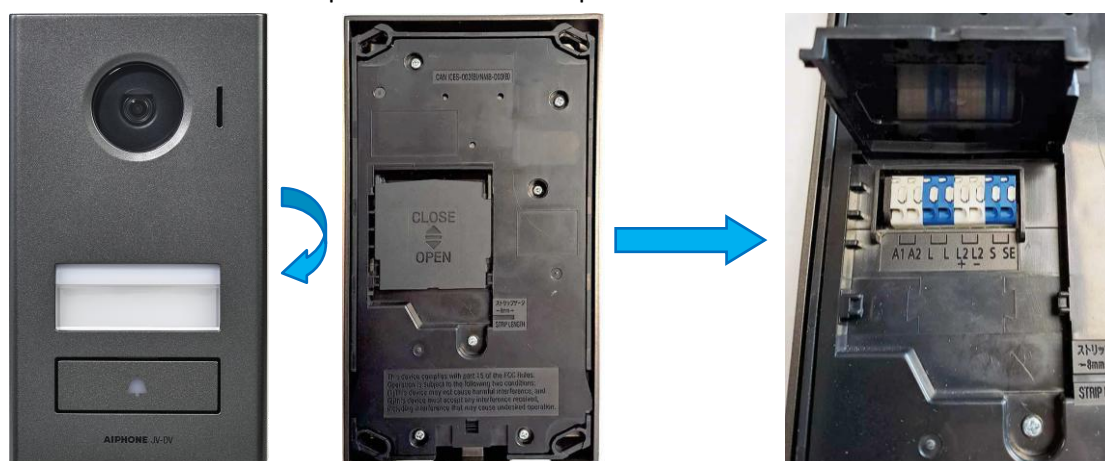


3. Installation and use of intercom :

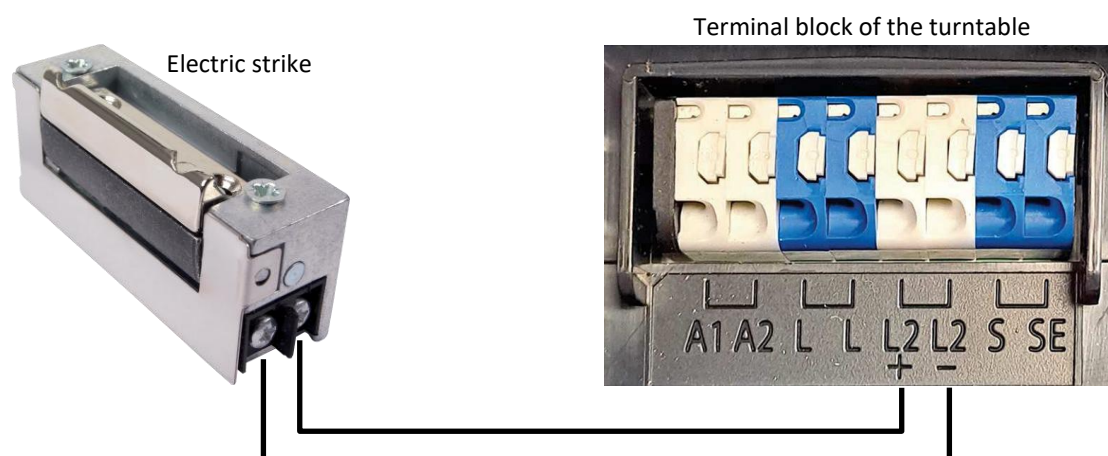
→ Refer to the [AIPHONE DBS-1AP/DBS-1A](#) manual ([audio kit](#)) in the accessory package.

## Strike plate with a videophone

1. Return the turntable and open the connections protection valve.



2. Connect the strike plate on the terminal block of the turntable, in contact 12Vcc.



3. Installation and use of videophone :

→ Refer to the [AIPHONE JVS1V](#) manual ([video kit](#)) in the accessory package.