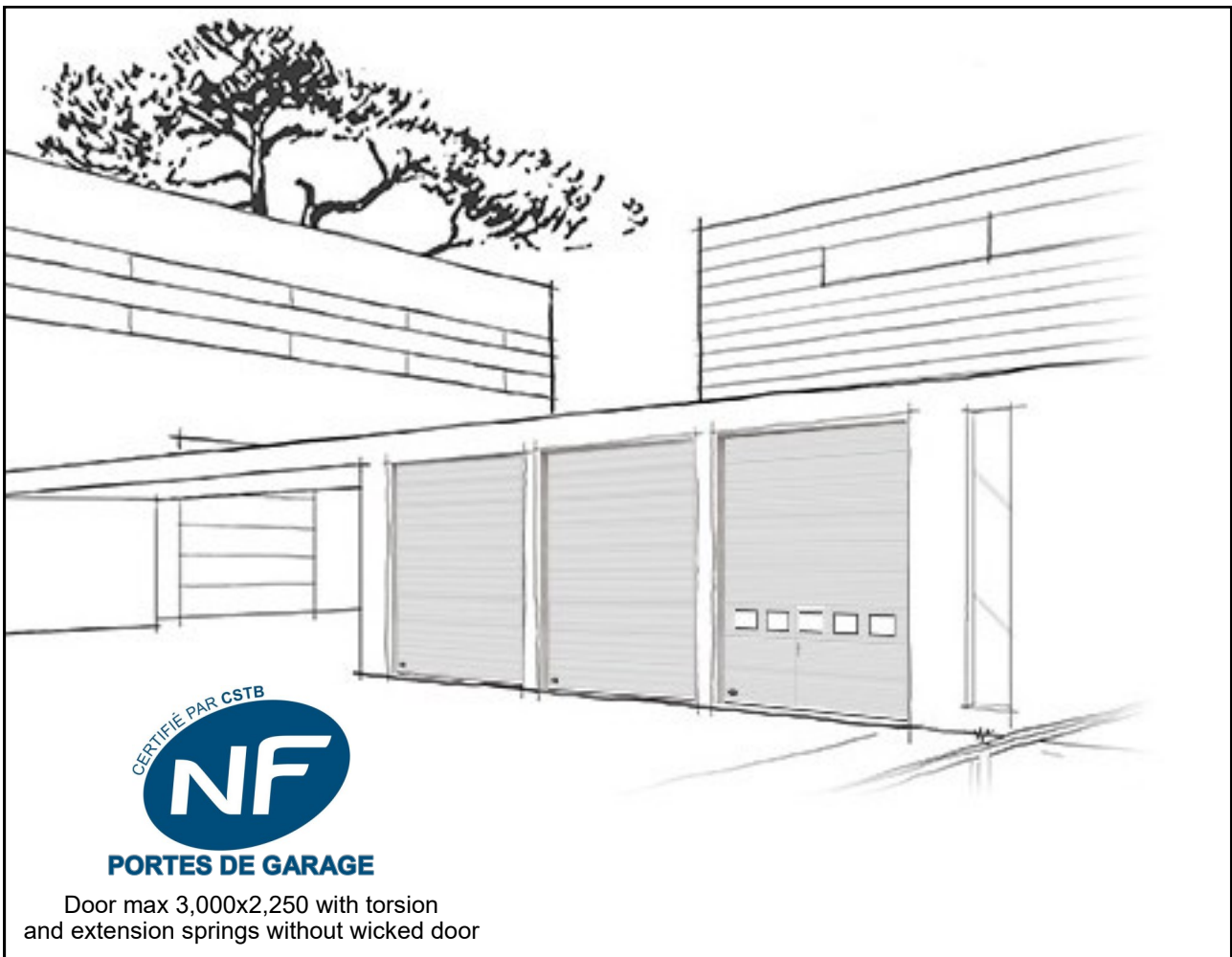


Maintenance booklet and removal manual

N°7300

09/19

Sectional doors



(Document reserved for users)

Maintenance and inspection booklet

Frequency : - 1 intervention approximately every 4000 cycles or
 - 1 intervention every 6 months

Site address :	
Status and name of the fence element :	

Maintenance check points (see enclosed maintenance booklet)



**Clean the shutter regularly with clear water.
 The use of detergent may degrade the color or gloss of the coating.**

A/ SHUTTER

- **Check the cables :**
 - . General condition.
 - . Mounting on drums or pulley supports and on low suspensions.
- **For industrial doors :**
 - . Checking the cable anti-fall guards: Status and operation.
 - . In the event of one or several cable anti-fall guard(s) being triggered due to mechanical failure, the anti-fall guard(s) and cable(s) must be replaced.
- **For the villa doors :**
 - . If a cable breaks, the cable on the opposite side must be replaced.
- **Check panel status.**
- **Check the condition of the joints :** Hinges and fasteners.
- **Check the condition of the guide rollers and lubricate the bearings.**
- **Check the condition of the bottom seal.**
- **Check the lock :**
 - . Fastening and operation.
- **Check the level of the shutter.**
- **Check the panels :**
 - . Adjustment on side seals.
 - . At the bottom of the rail (to be checked in the original manual).
- **Wicket door option :**
 - . Check the closer setting.
 - . If motorized door, check the operation of the safety microswitch and its power supply cable.

B/ AXIS

- **Check the spring anti-fall guards :**
 - . General condition and operation.
 - . Attachment to overhead or consoles or brackets depending on the type of door.
 - . In the event of a spring anti-fall guard(s) being triggered due to mechanical failure, the replacement of the anti-fall guard(s) and spring(s) is mandatory.
- **Check the cable drums :**
 - . General condition.
 - . Mounting on the axis : Key and clamping screw.
 - . Winding the cables onto the drum.
- **If 2-part axis :**
 - . Check the connection of the axes and the tightness of the coupling sleeve.
- **Check the springs :**
 - . General condition.
 - . Mounting on the axis : Key and locking screw.
 - . Mounting on the anti-fall guards.
 - . Manually operate the door.
 - . If necessary, adjust the voltage.
- **If motorized door :**
 - . Check the operator position and the condition of the key (only with industrial operator).

C/ RAILS

- **Check that the vertical rails are securely fastened to the structure.**
- **Check the position of the horizontal rails**
(perpendicular to the overhead and parallel to each other).
- **Check the horizontal rail fastening :**
 - . Mounting the hangers.
 - . Mounting on end bearings or vertical rails.
 - . Mounting and condition of the rubber stops (Intellidrive)
- **Check the condition of the end bearings + Overhead mounting.**
- **Check the roller tracks :**
 - . Inner panels, no rough edges.
 - . Perfect junction of vertical rails, curves and horizontal rails.
 - . Clean and lubricate the bottom of the rail.
- **Check the condition of the seals (side and top).**
- **If power door (with Indus operator only), check :**
 - . Mounting the operator support on a rail.
 - . Mounting the operator on its support.

D/ OPERATION (if power door)
- In general :

- **Check the state of the electrical wiring and its protection (circuit breaker).**
- **Check the access and operation of the power circuit breaker.**
(it must be located near the door)
- **Check that the control box or housing is closed.**
- **Door on the ground, disengage the operator and check the door manually for proper operation.**

- For the Intellidrive concept :

- **Check the condition of the 2 sprockets (shaft and operator).**
- **Check the lubrication of the sprockets.**
- **Mounting the operator support on a bearing or on a tube.**
- **Mounting the operator to its support bracket.**
- **Mounting the clutch cable (on operator and emergency operation).**
- **Clutch cable tension :**
The cable must be taut to keep the sprockets engaged, but be careful not to compress them so as to promote operator operation.
- **Door on the floor, disengage the operator, check the manual operation of the door, then close the door, engage the operator and repeat the learning of the operation (see Intellidrive installation manual).**

- For Indus operator :

- **Check the setting and function of the limit-switches.**
- **Check the setting and operation of the limit-switches for 380V operator**
(in case of phase inversion).
- **Check the function of the safety microswitches on the lock.**

- For Villa operator :

- **Check the mounting of the guide rail to the ceiling.**
- **Check the chain tension (see installation manual).**
- **Check the setting and operation of the limit-switches.**
- **Re-learn the forces (see installation manual).**

Maintenance booklet

intended for the owner of the fence element

Manufacturer's name : **FTFM LA TOULOUSAINE (31750)**
 Fence element identification number :
 Job site reference :
 Installer name :
 Date of installation :
 Type of operation :
 Safety devices :
 Final test of verification and operation carried out by the installer :
 Date : Observation :

Name : Signature :

Instructions for use : See user guide.

Logging of interventions						
Type of intervention				Intervener		
Maintenance	Repair	Replaced parts	No. of cycles*	Date	Name	Signature

* For power door with Intellidrive.

WARNING :

Any modification or improvement of this fence element must be compliant with the standard EN 13241 + A2. In this case, a "modification/transformation" file must be created as per the standard EN 12635 annex C.

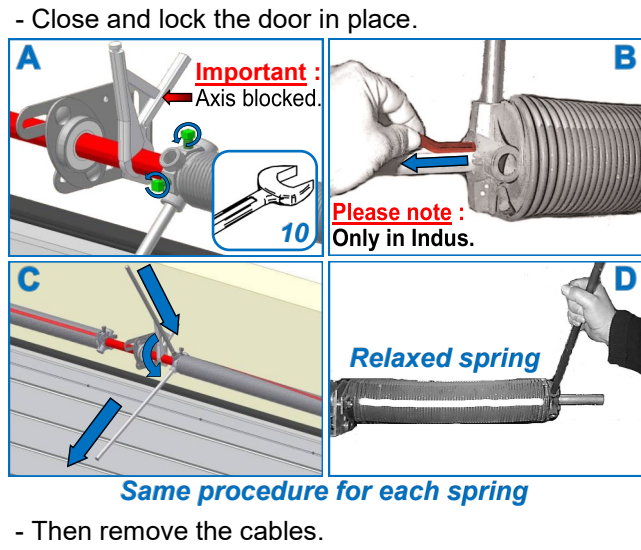
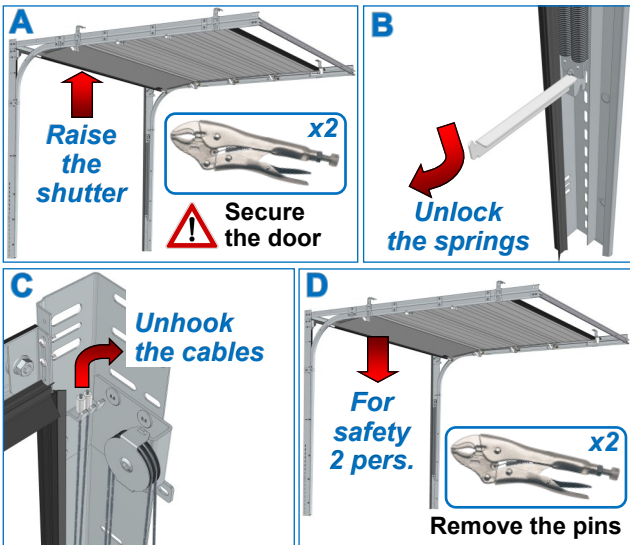
Removal manual

! Several precautionary measures must be taken to ensure safe disassembly of the door. For the safety of all, please observe the following indications and warnings ! These instructions are for experienced professionals only.

! The torsion springs are under high tension. Always work with extreme caution. Installation, maintenance and repairs may only be carried out by experienced and fully trained installers. Always use proper tools.

1 - RE100 (Extension Springs)

or 1 - RT200 (Torsion Springs)



2 - Remove operator or winch.

3 - Remove panels as you go, starting with the top panel.

4 - Dismantle the balancing line, except for spring loaded extension door (not available).

! Spare parts may slip off the axis. For example : Reel, key, etc.

5 - Dismantle the hangers, the rod and the horizontal rails.

6 - Dismantle the vertical rails (with the crossbar, if extension spring door).

For more details, about the mounting instructions : Please refer to the door installation instructions.