

Sheet : N° 1000

DIAGNOSTIC

Grilles & Roller shutters

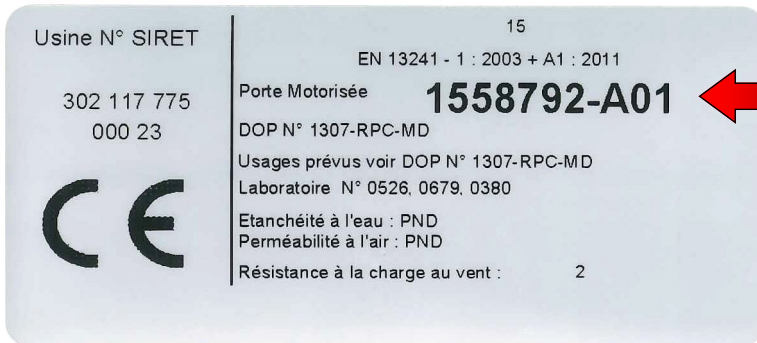
Important : Before contacting our technical support department, please complete the diagnostic sheet below. You will be asked for this information during the call.

Mechanical checks on the shutter		
Actions	OK	Readings / Findings
Visual check of the shutter or grille : Evidence of impact, damaged guiding rails or slats, blocked slats, twisted axle...		
Check that the shutter can be manually operated up to its full height.		
Check the clearances of the slats/guiding rails/winding plates. Cf. installation manual.		
Check that the screw heads do not exceed the bottom of the guiding rail.		
Check the plumb and levels.		
Check the settings (gradient) of the start curves (at 45°).		
With hurricane slides, check the position of the slats with hurricane hooks (cf. specific order in installation manual).		
Visually check that the anti-fall guard and the bearing cages of the spring spools are in good condition.		
Check that the operator/ring gear are in good condition.		
Check that the guiding rails and the plates have been greased.		

(Document reserved for installers)

Electrical checks on the shutter		
Actions	OK	Readings / Findings
<i>If there is no display or leds lit up, check the mains power supply and check that the protection fuses are in good condition.</i>		
<i>Visually check that the electronic board is in good condition.</i>		
<i>Check all the wires between the operator/box/electrical network.</i>		
<i>Check that none of the operator's safety devices have been triggered (emergency operation, limit-switch safety device).</i>		
<i>Read the error message display on the automation box and cf. the operator electrical connection manual.</i>		
<i>If the operator is single-phase and after having checked all of the above points, directly connect the operator.</i>		

The CE label is situated on the bottom of the shutter, on the right, when viewed from the outside.



Order N° to be stated to Customer Services

EXAMPLE